

Entry level operator interfaces for use with Programmable Controllers and IMO Jaguar Drives

- High quality LCD display with LED backlight
- Easy to use configuration software
- Interface to a wide range of PLC's
- Drivers including IMO PLC's and Jaguar drives
- 2 status LED's
- IP65
- Password screens for security
- CE marked
- 16 bit processor



Options and ordering codes

Part No.	Description	Price
IMO-MI2L20C	2 line by 20 character LCD display LED backlight	£134.00
IMO-MI4L20C	4 line by 20 character LCD display LED backlight	£150.00

Specifications

Technology	16 bit Intel 186 architecture compatible
Communications port	Single serial port accessible at rear of enclosure via standard 9-way female D-type connector. Serial port is software configurable to support either RS232 RS485 2-wire/4-wire RS422, including multi-drop
Power Supply	9VDC-35VDC reverse polarisation protection
Memory Flash	128K bytes used to hold firmware, database and protocols
Memory SRAM	32K bytes solely for variable data (volatile memory no battery back-up)
Status Indicators	2 LED's provided on front – serial port activity – User configurable alarm
Sounder	Internal buzzer provided for key presses and other alternative events, as determined by application software
Contrast Control	Manual adjustment via potentiometer accessible at rear of enclosure
Enclosure	Two part APB injection molded case designed to meet IP65/NEMA4/12 front panel
Weight	Approximately 300g
Mounting	Panel mounting. No mounting studs, fixed into place using clips
Temperature range	Operating 0-55°C non-operating -20 to 70°C
Relative Humidity	5 to 90%
Vibration	Operating 5 to 250Hz 1G
CE Compliance – Emissions	EN50081-1 class A radiated conducted emissions
Immunity	EN50082-1 light industry immunity
Safety	EN60950 low voltage directive

IMO MI2L20C

Entry level operator interfaces for use with Programmable Controllers and IMO Jaguar Drives

- Two line by 20 character LCD display with LED backlight with 5.5mm high characters providing excellent visibility in all conditions
- 4 programmable function keys
- 6 navigational keys
- Power consumption 2.5 watts
- Dimensions 85 x 150 x 42



Dimensions



150

85

CUTOUT

142



74

IMO MI4L20C

Entry level operator interfaces for use with Programmable Controllers and IMO Jaguar Drives

- Four line by 20 character LCD display with LED backlight with 5.5mm high characters providing excellent visibility in all conditions
- 4 programmable function keys
- 6 navigational keys
- Power consumption 2.5 watts
- Dimensions 85 x 150 x 42

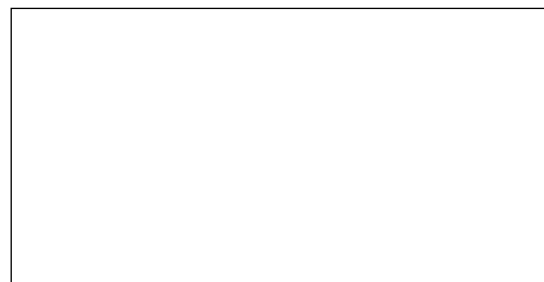


150

85

CUTOUT

142



74

High function operator interfaces for use with Programmable Controllers and IMO Jaguar Drives

- High quality LCD display with LED backlight
- Easy to use configuration software
- 2 configurable serial ports RS232 and RS485/RS422
- Parallel printer port
- Powerful BASIC scripting language
- 8 programmable bicolour status LED's
- Expansion capabilities
- Interface to a wide range of PLC's
- Drivers including IMO PLC's and Jaguar drives
- 2 status LED's
- IP65
- Password screens for security
- CE marked
- 16 bit processor



Options and ordering codes

Part No.	Description	Price
IMO-MI4L20CX	4 line by 20 character LCD display LED backlight with alphanumeric keys	£255.00
IMO-MI4L40CX	4 line by 40 character LCD display LED backlight with alphanumeric keys	£358.00
IMO-MI8L40CX	8 line by 40 character LCD display LED backlight with alphanumeric keys	£431.00

Specifications

Technology	16 bit Intel 186 architecture compatible
Scripting Language	Powerful BASIC scripting language
Communications Port	Two serial port accessible at rear of enclosure via standard 9-way female D-type connector. Serial port is software configurable to support either RS232 RS485 2-wire/4-wire/RS422, including multi-drop
Parallel Port	Single printer port accessible at rear of enclosure via standard 25-way male D type connector
RTC	Battery backed real time clock
Power Supply	9VDC-35VDC reverse polarisation protection
Memory Flash	512K bytes used to hold firmware, database and protocols
Memory SRAM	128K bytes solely for variable data (volatile memory no battery back-up)
Status Indicators	2 LED's provided on front – serial port activity – User configurable alarm
Sounder	Internal buzzer provided for key presses and other alternative events, as determined by application software
Expansion	Expansion capability
Contrast Control	Manual adjustment via potentiometer accessible at rear of enclosure
Enclosure	Two part APB injection moulded case designed to meet IP65/NEMA4/12 front panel
Weight	Approximately 500g
Mounting	Panel mounting. No mounting studs, fixed into place using clips
Temperature range	Operating 0-55°C non-operating -20 to 70°C
Relative Humidity	5 to 90%
Vibration	Operating 5 to 250Hz 1G
CE Compliance – Emissions	EN50081-1 class A radiated conducted emissions
Immunity	EN50082-1 light industry immunity
Safety	EN60950 low voltage directive

IMO MI2L20CX

High functions operator interfaces for use with Programmable Controllers and IMO Jaguar Drives

- Four line by 20 character LCD display with LED backlight with 5.5mm high characters providing excellent visibility in all conditions
- 4 programmable function keys
- 4 navigational keys
- 8 user defined function keys
- Alpha-numeric keys
- Power consumption 2.75 watts
- Dimensions 140 x 230 x 48



Dimensions



230

140

CUTOUT
219.5



124

IMO MI4L40CX

High functions operator interfaces for use with Programmable Controllers and IMO Jaguar Drives

- Four line by 40 character LCD display with LED backlight with 5.5mm high characters providing excellent visibility in all conditions
- 4 programmable function keys
- 4 navigational keys
- 8 user defined function keys
- Alpha-numeric keys
- Power consumption 4.0 watts
- Dimensions 140 x 230 x 48



Dimensions



230

140

CUTOUT
219.5



124

IMO MI8L40CX

High functions operator interfaces for use with Programmable Controllers and IMO Jaguar Drives

- Eight line by 20 character 240 *64 graphics LCD display with LED backlight with variable high characters providing excellent visibility in all conditions
- 4 programmable function keys
- 4 navigational keys
- 8 user defined function keys
- Alpha-numeric keys
- Power consumption 4.0 watts
- Flash 512K bytes used to hold firmware, database and protocols
- 128K bytes SRAM solely for variable data
- Dimensions 140 x 230 x 48



Dimensions



230

140

CUTOUT
219.5



124

High function graphics operator interfaces for use with Programmable Controllers and IMO Jaguar Drives

- High quality STN mono and colour touch screen
- Easy to use configuration software
- 2 configurable serial ports RS232 and RS485/RS422
- Parallel printer port
- 100/10 ethernet interface
- Windows CE 3.0
- Powerful VBA scripting language
- Expansion capabilities
- Interface to a wide range of PLC's
- Drivers including IMO PLC's and Jaguar drives
- 2 status LED's
- IP65
- Password screens for security
- CE marked
- 32 bit RISC processor



Options and ordering codes

Part No.	Description	Price
IMO-MI320 MONOT	320 *240 5.7" monochrome LCD display with CCFL and touch	£584.00
IMO-MI320 COLOURT	320 *240 5.7" colour LCD display with CCFL and touch	£788.00
IMO-MI9.5COLORT	640 *480 10.4" colour LCD display with CCFL and touch	£1238.00

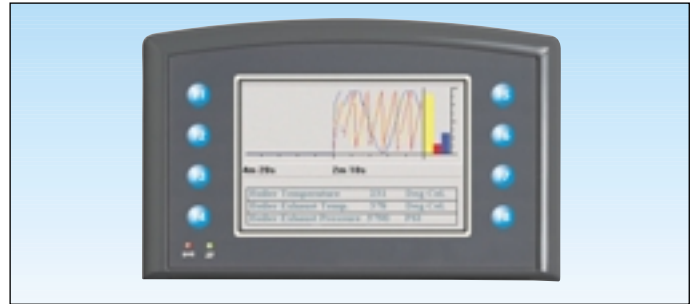
Specifications

Technology	32 bit embedded RISC processor
Operating System	Windows CE 3.0
Scripting Language	Powerful VBA visual basic for applications scripting language
Communications Port	Two serial port accessible at rear of enclosure via standard 9-way female D-type connector. Serial port is software configurable to support either RS232 RS485 2-wire/4-wire/RS422, including multi-drop one 100/10 base T ethernet one USB port
Parallel Port	Single printer port accessible at rear of enclosure via standard 25-way male D type connector
RTC	Battery backed real time clock
Power Supply	9VDC-35VDC reverse polarisation protection
Memory Flash	8M bytes used to hold firmware, database and protocols
Memory SRAM	32M bytes solely for variable data (volatile memory no battery back-up)
Status Indicators	2 LED's provided on front – serial port activity – User configurable alarm
Sounder	Internal buzzer provided for key presses and other alternative events, as determined by application software
Expansion	Expansion capability
Contrast Control	Contrast adjustment via software, including temperature compensation
Enclosure	Two part APB injection moulded case designed to meet IP65/NEMA4/12 front panel
Weight	Approximately 1Kg
Mounting	Panel mounting. No mounting studs, fixed into place using clips
Temperature range	Operating 0-55°C non-operating -20 to 70°C
Relative Humidity	5 to 90%
Vibration	Operating 5 to 250Hz 1G
CE Compliance – Emissions	EN50081-1 class A radiated conducted emissions
Immunity	EN50082-1 light industry immunity
Safety	EN60950 low voltage directive

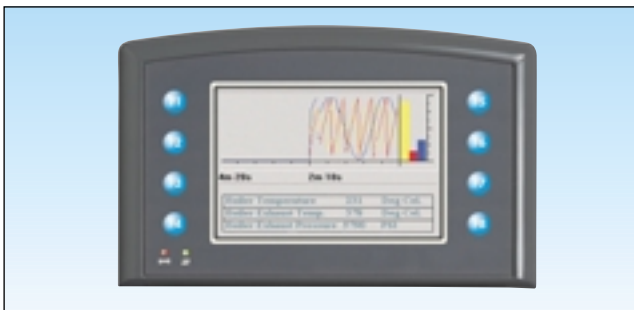
IMO MI320MONOT

High function graphics operator interfaces for use with Programmable Controllers and IMO Jaguar Drives

- High quality 5.7" STN mono touch screen 320 *240
- Windows CE 3.0
- VBA scripting
- 8 user defined function keys
- Dimensions 140 x *230 x *65



Dimensions



230

140

CUTOUT
219.5



124

IMO MI320COLOURT

High function graphics operator interfaces for use with Programmable Controllers and IMO Jaguar Drives

- High quality 5.7" STN colour touch screen 320 *240
- Windows CE 3.0
- VBA scripting
- 8 user defined function keys
- Dimensions 140 x *230 x *65



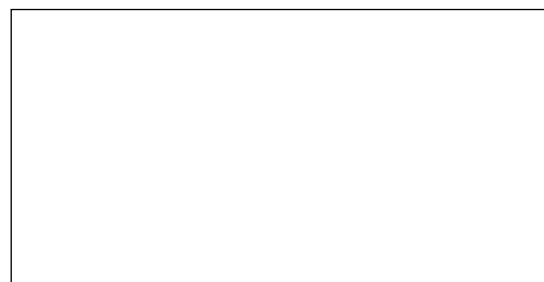
Dimensions



230

140

CUTOUT
219.5

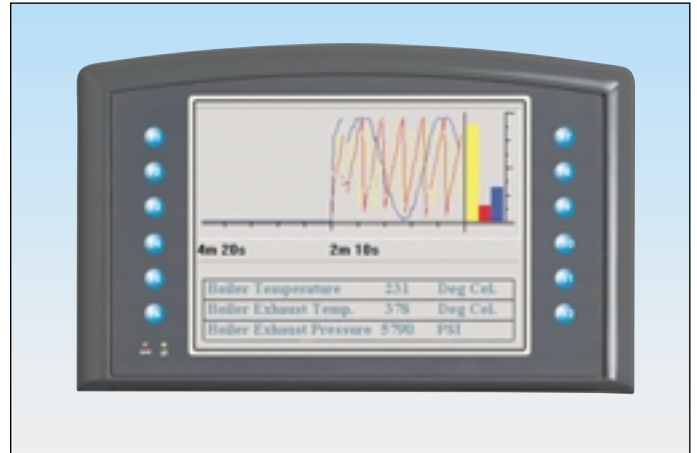


124

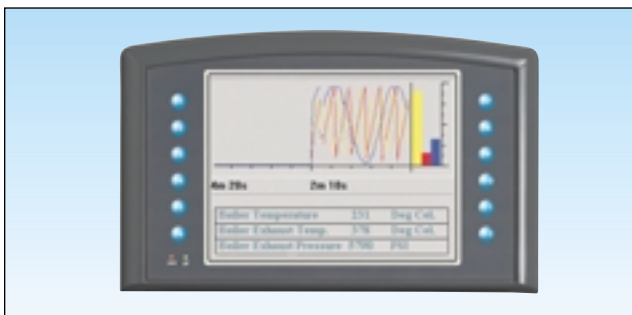
IMO MI9.5COLOURT

High function graphics operator interfaces for use with Programmable Controllers and IMO Jaguar Drives

- High quality 10.4" STN colour touch screen 640 *280 pixel
- Windows CE 3.0
- VBA scripting
- 8 user defined function keys
- Dimensions 140 x *230 x *65



Dimensions



230

140

CUTOUT

219.5



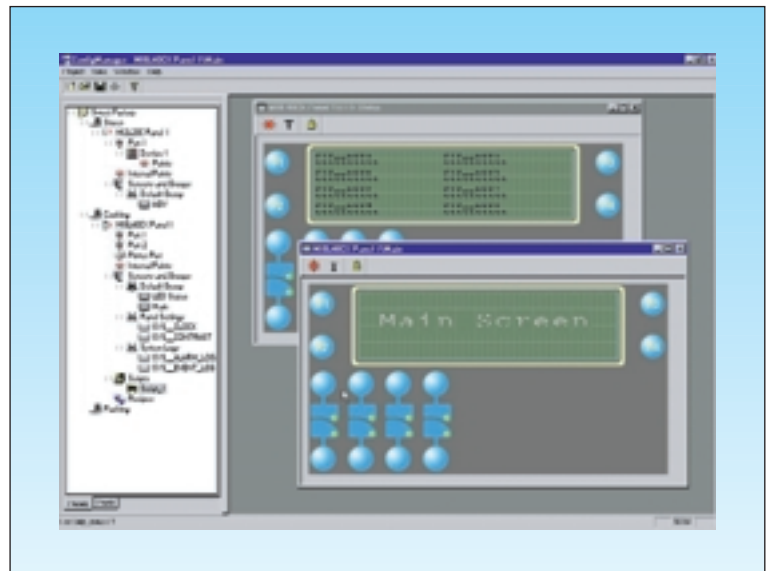
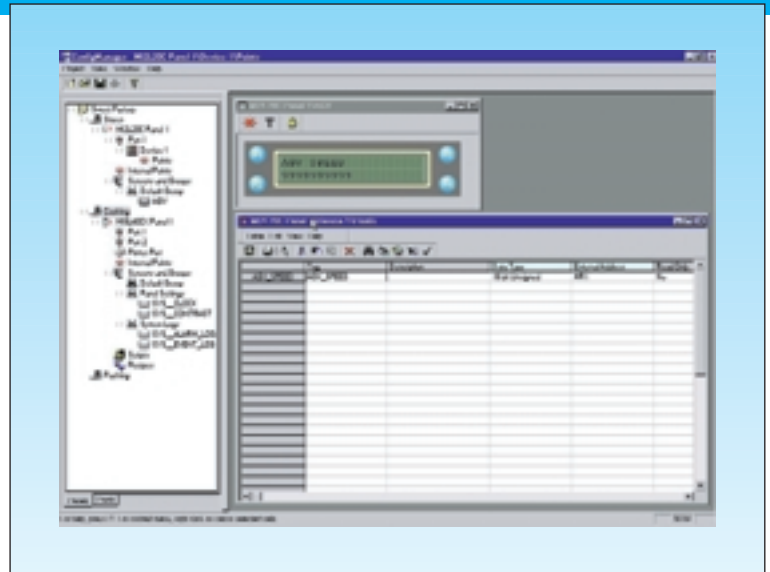
124

Options and ordering codes

Part No.	Description	Price
IMO-MIPROCABLE	PC to MI programming cable	£39.00
IMO-RS232CABLE2M	MI to PLC cable RS232 2 meter (loader)	£39.00
IMO-RS485CABLE2M	MI to PLC cable RS485 2 meter	£39.00

Is a powerful and easy to use configuration package for all of the IMO MI range of Human machine interfaces from the entry level to the full function graphics

- Utilises powerful windows based techniques
 - Drag and drop
 - WYSIWG (what you see is what you get)
 - Search and replace
- Powerful IDE (Integrated Development Environment)
 - PROJECT BASED – Easy to manage large projects. Can download to multiple displays with one click (Mid to graphics range)
 - SCREEN EDITOR – Is used to easily configure the screens. Multiple screens can be edited. WYSIWYG and drag and drop functionality is utilised
 - POINTS EDITOR – Is used to configure the interface from the display to the device. A simple spreadsheet format is used
 - ALARM EDITOR – Is used to configure alarms
 - SCRIPTING EDITOR – Is used to edit the BASIC and VBA scripts. Syntax validation is provided
- Bitmaps can be imported into the graphic displays
- A simulation function enables the screens and operation to be debugged without the need to connect to the display
- Script debug functionality is provided



Minimum System Requirements

- Pentium II BM PC or compatible
- Windows 95/98/NT/2000
- VGA or better
- 100 MB hard disk
- Memory 32Mb
- Serial port
- Mouse