

Chapter 13 Troubleshooting

This chapter is to describe various errors that may occur in system, their causes and actions to take against. See chapter 13.1 Abnormal operation and 9.2 Troubleshooting for details of errors and actions to take.

13.1 Abnormal operation

Error code	Error display	Description
E00-01	ECM_12~ECM_15(See Chapter 7)	H/W self-diagnosis error
E00-02	ECM_13, ECM_18	Interfacing error with CPU

[Table 13.1(A)] H/W related error of communication module

Error code	Error display	Description
E01-01	ECM_16 ~ ECM_18 ECM_22 ~ ECM_28	Communication defect(communication not agreeable) Network error

[Table 13.1(B)] Abnormal communication status of communication module

Error code	Error display	Description
E02-01	ECM_18	Abnormal interfacing between Enet module & CPU

[Table 13.1(C)] Abnormal interfacing with communication module CPU

Error code	Error display	Description
E03-01	HS link parameter setting error	If HS link parameter set wrongly or not set or if parameter crushed after online link enabled setting.
E03-02	HS link not executed	If communication is not available as desired even though HS link parameter is normal after link enabled setting
E03-03	Contact of _HSxRLNK/_HSxTRX is not On when HS link executed	If _HSxRLNK is not On even though HS link parameter is normal after link enabled setting
E03-04	Contact of _HSxLTBL is On when HS link executed	If HSxLTBL is On due to error on PLC and communication after link enabled setting and then HS link _HSxRLNK On

[Table 13.1(D)] Abnormal operation of HS link function

Chapter 13 Troubleshooting

Error code	Error display	Description
E04-01	Operation error on E_CONN FB	If FB' s ERR is On or FB' s NDR is not 1
E04-01	Operation error on TCP_SEND,UDP_SEND FB	If FB' s ERR is On or FB' s NDR is not 1
E04-01	Operation error on TCP_RCV,UDP_RCV FB	If FB' s ERR is On or FB' s NDR is not 1

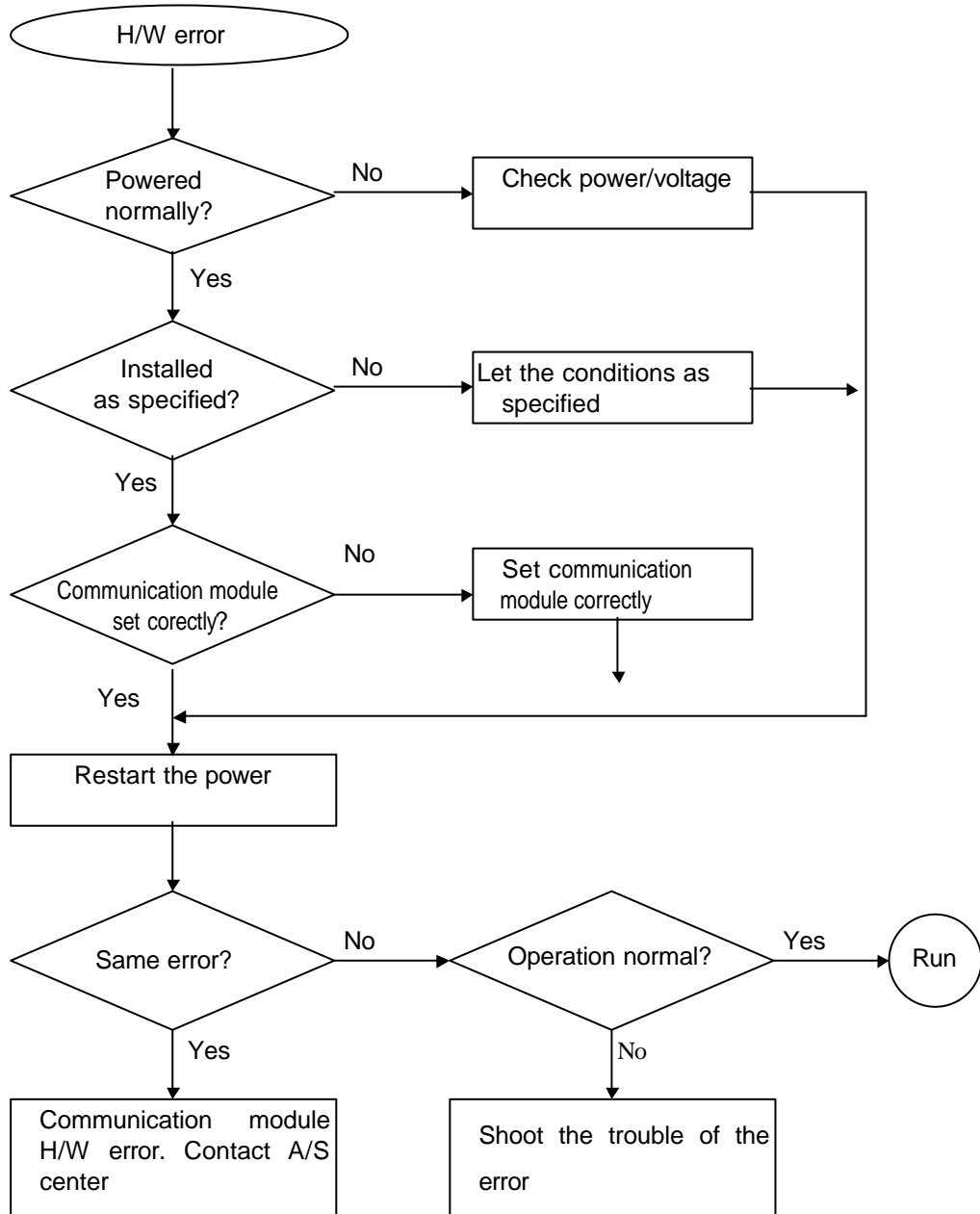
[Table 13.1(E)] Abnormal operation of FB

Error code	Error display	Description
E05-01	If [No response] message displayed when remote connection requested	If RS-232C cable not connected between GMWIN and PLC, or PLC is powered Off
E05-02	If [Other error message] displayed when remote connection requested	If service not executed normally due to unsuitable request

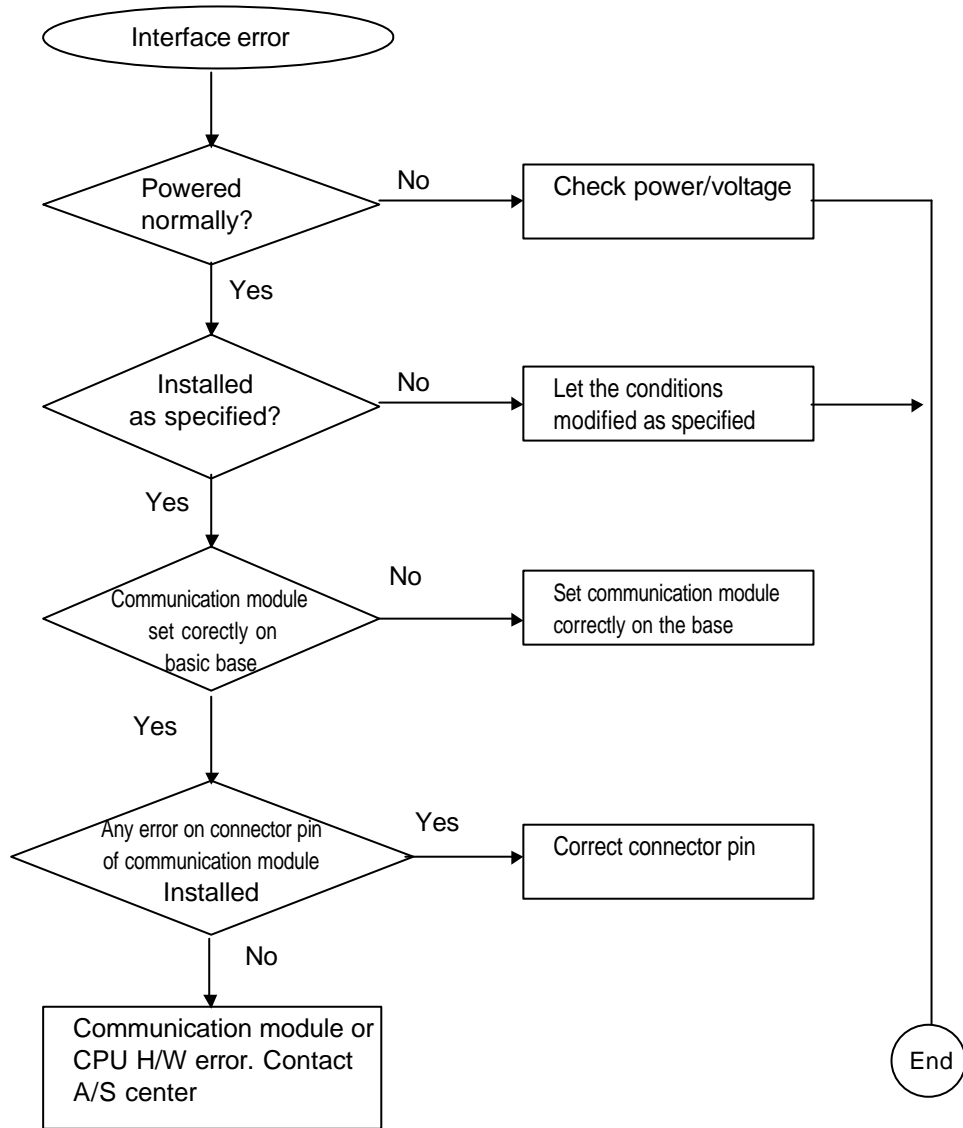
[Table 13.1(F)] Operation error of GMWIN communication service function

13.2 Troubleshooting

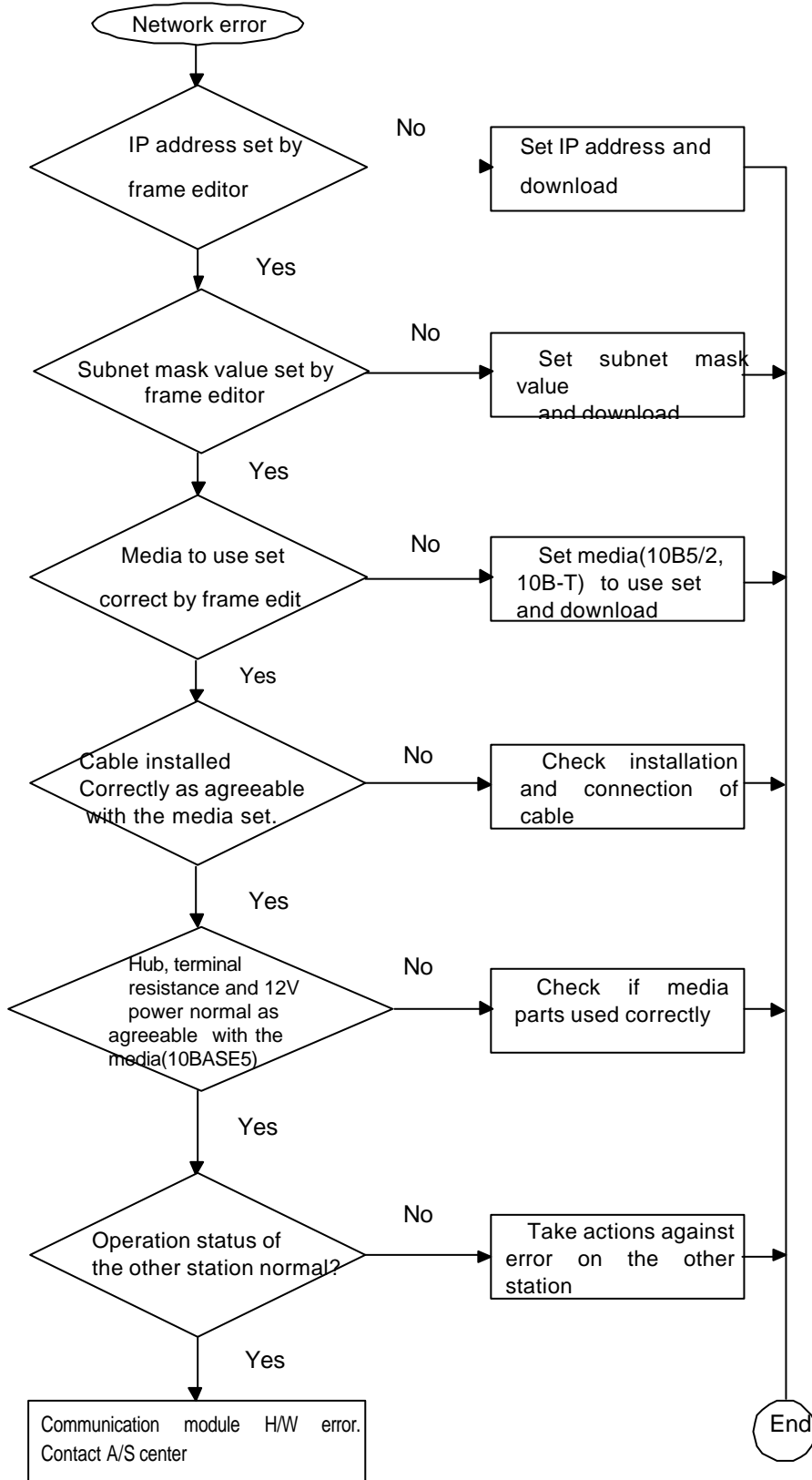
13.2.1 Error code E00-01 : H/W error



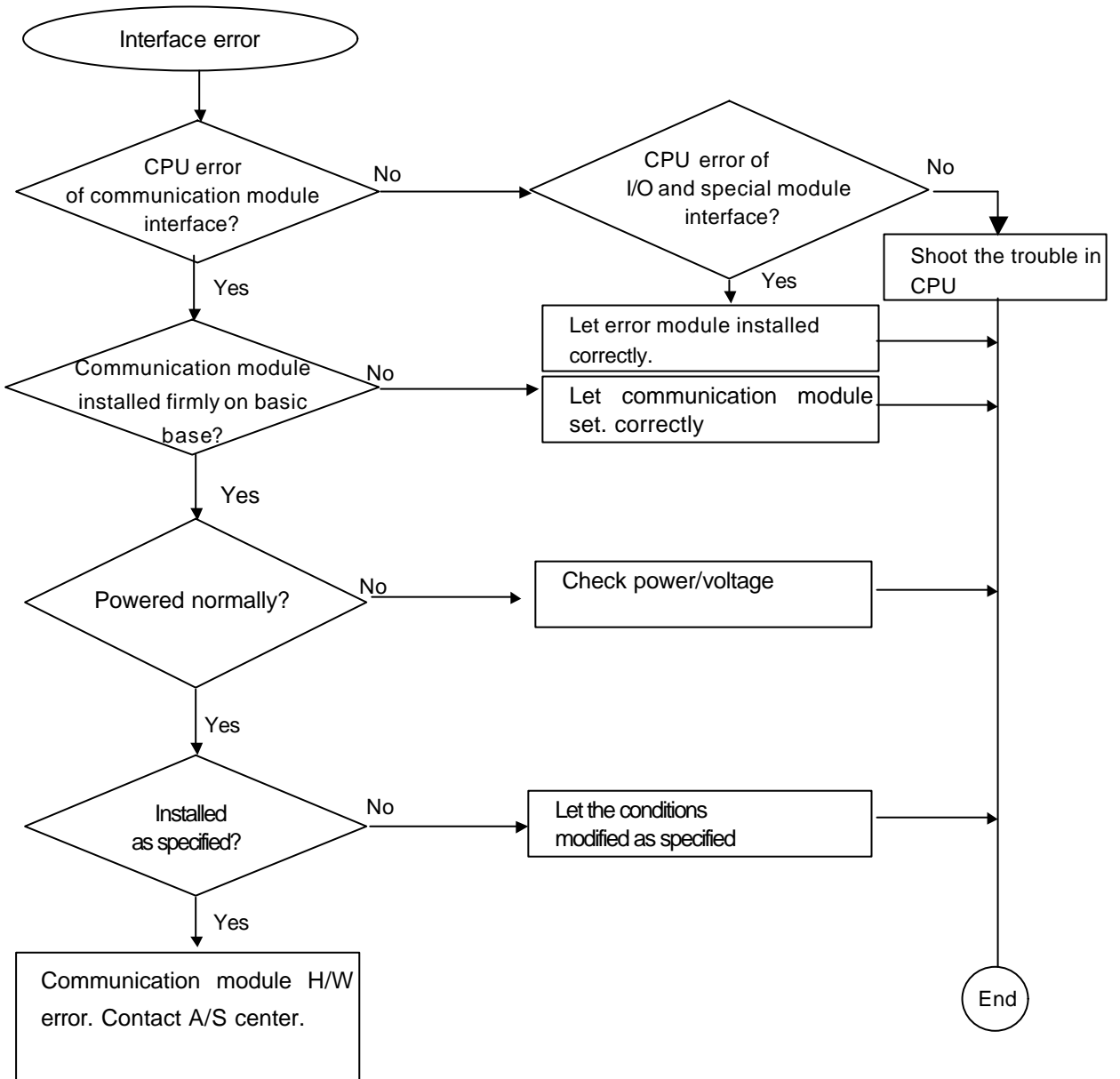
13.2.2 Error code E00-02 : Interface error



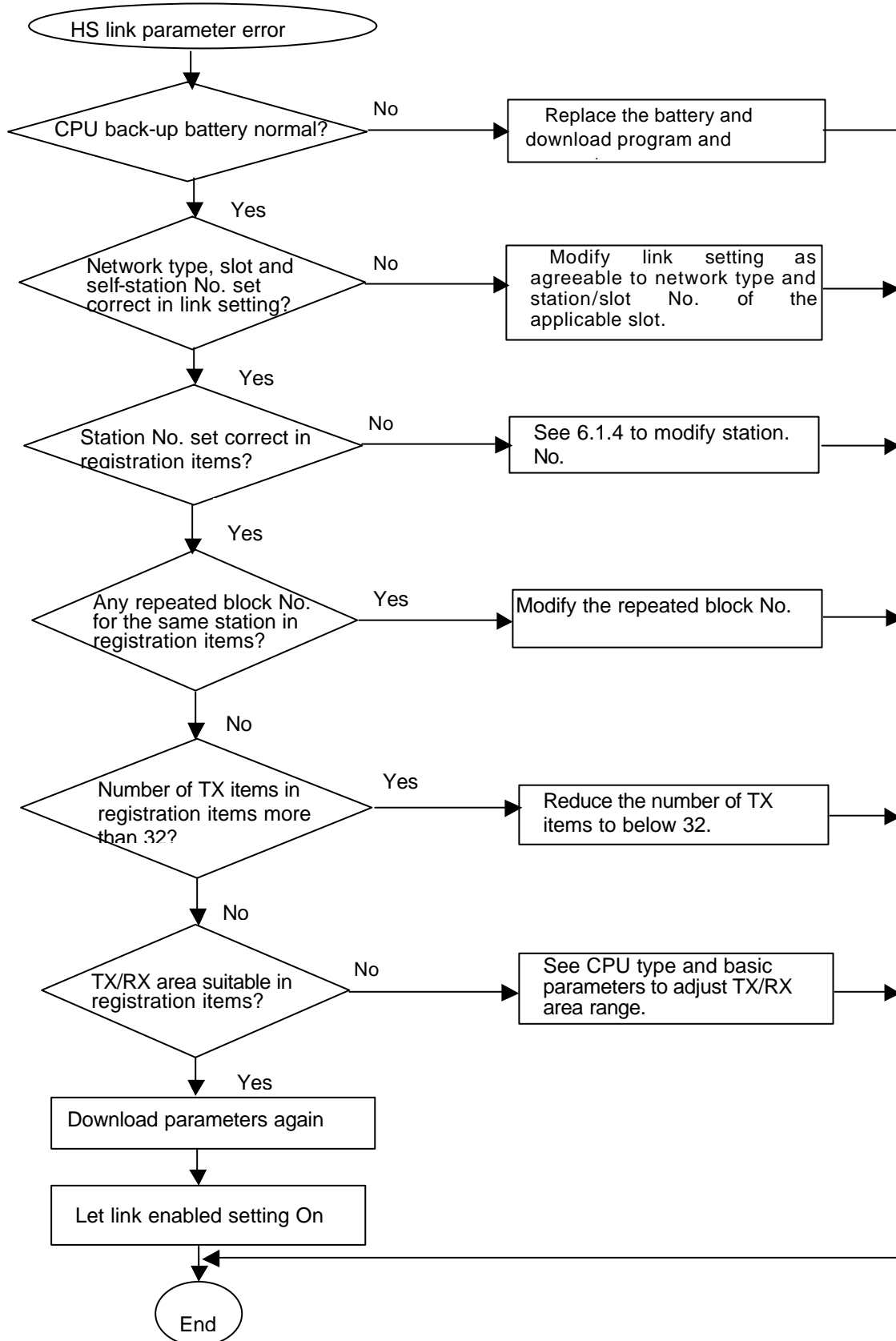
13.2.3 Error code E01-01 : Network error



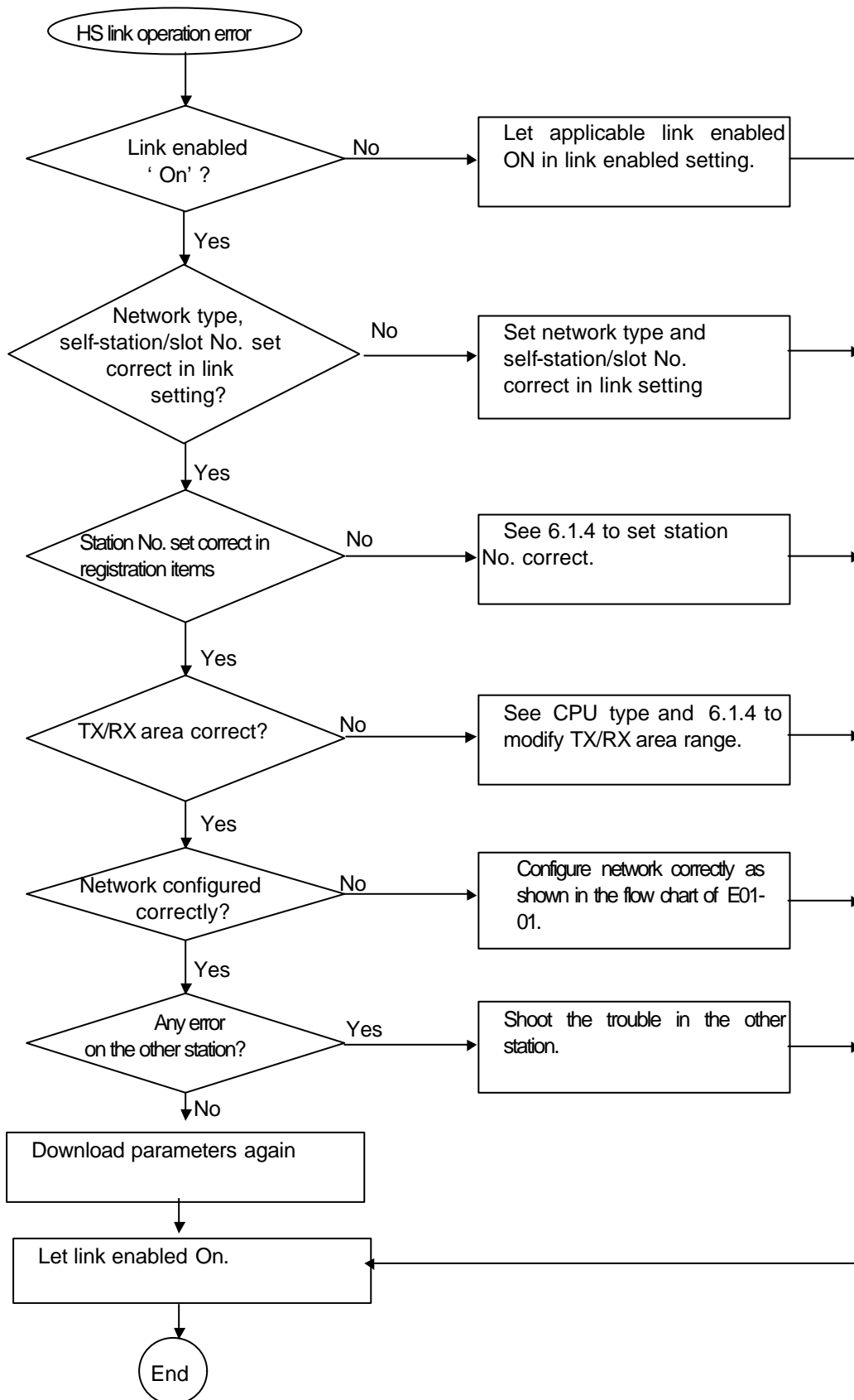
13.2.4 error code E02-01 : Interface error with CPU during operation



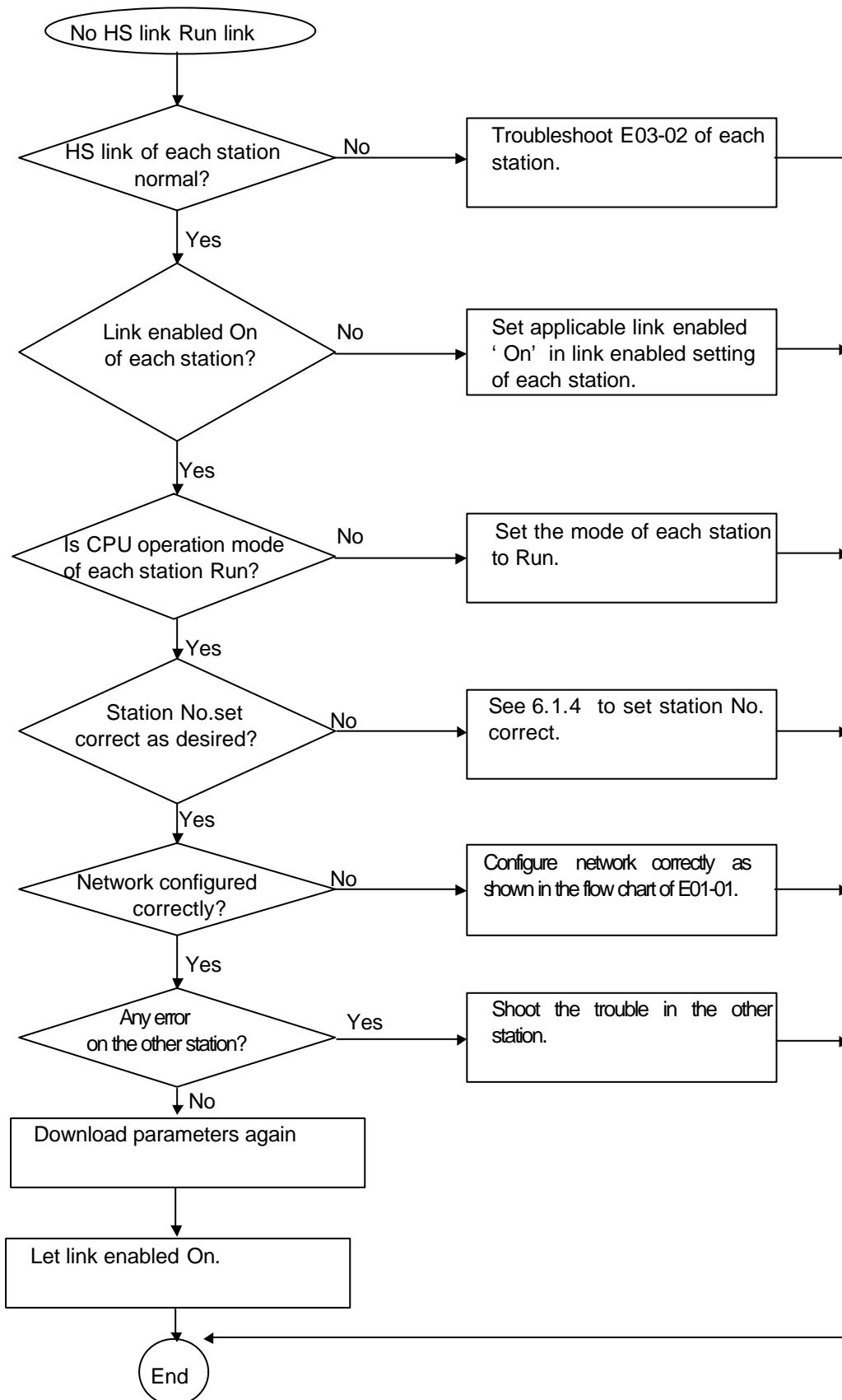
13.2.5 Error code E03-01 : HS link parameter error



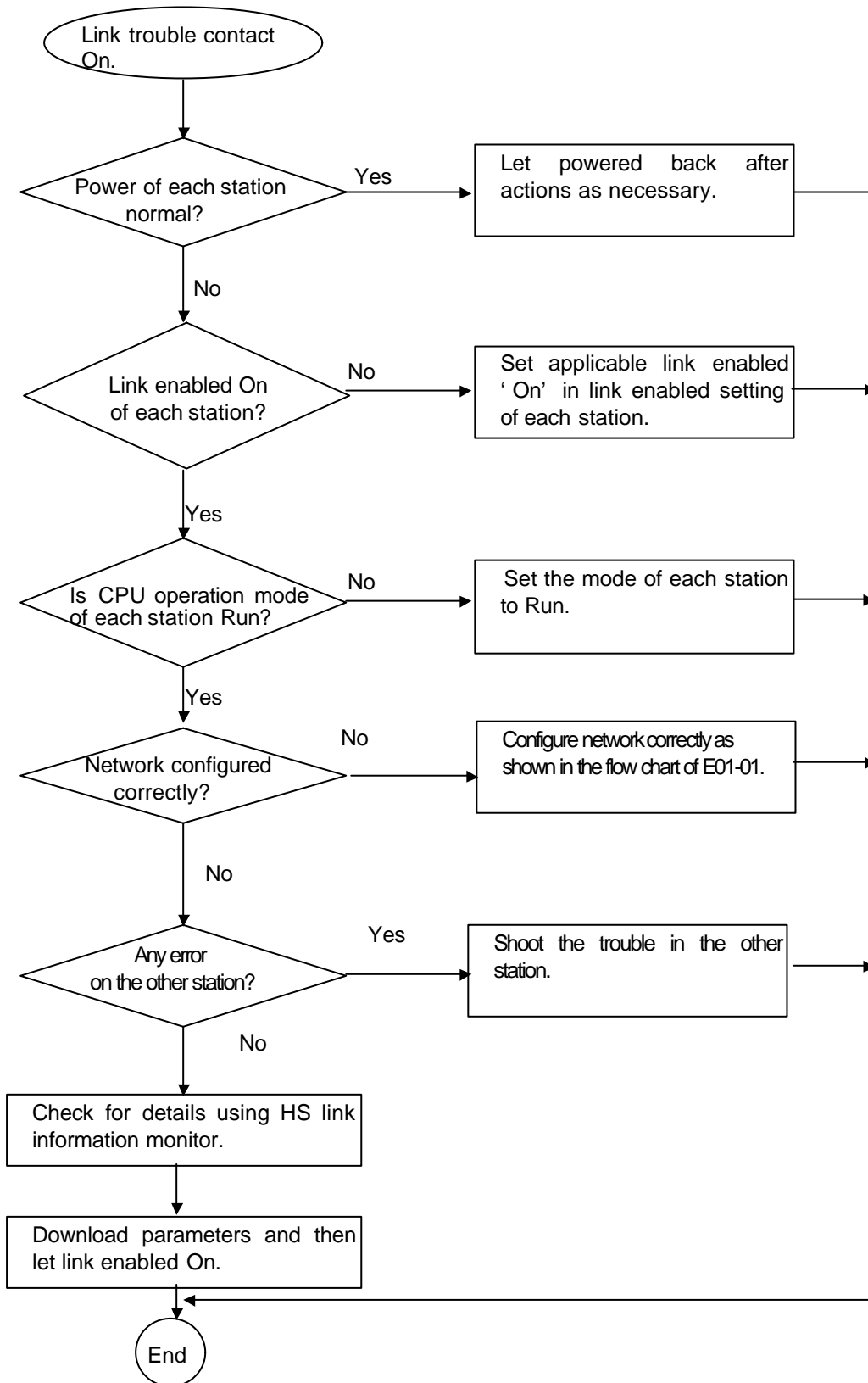
13.2.6 Error code E03-02 : HS link operation error



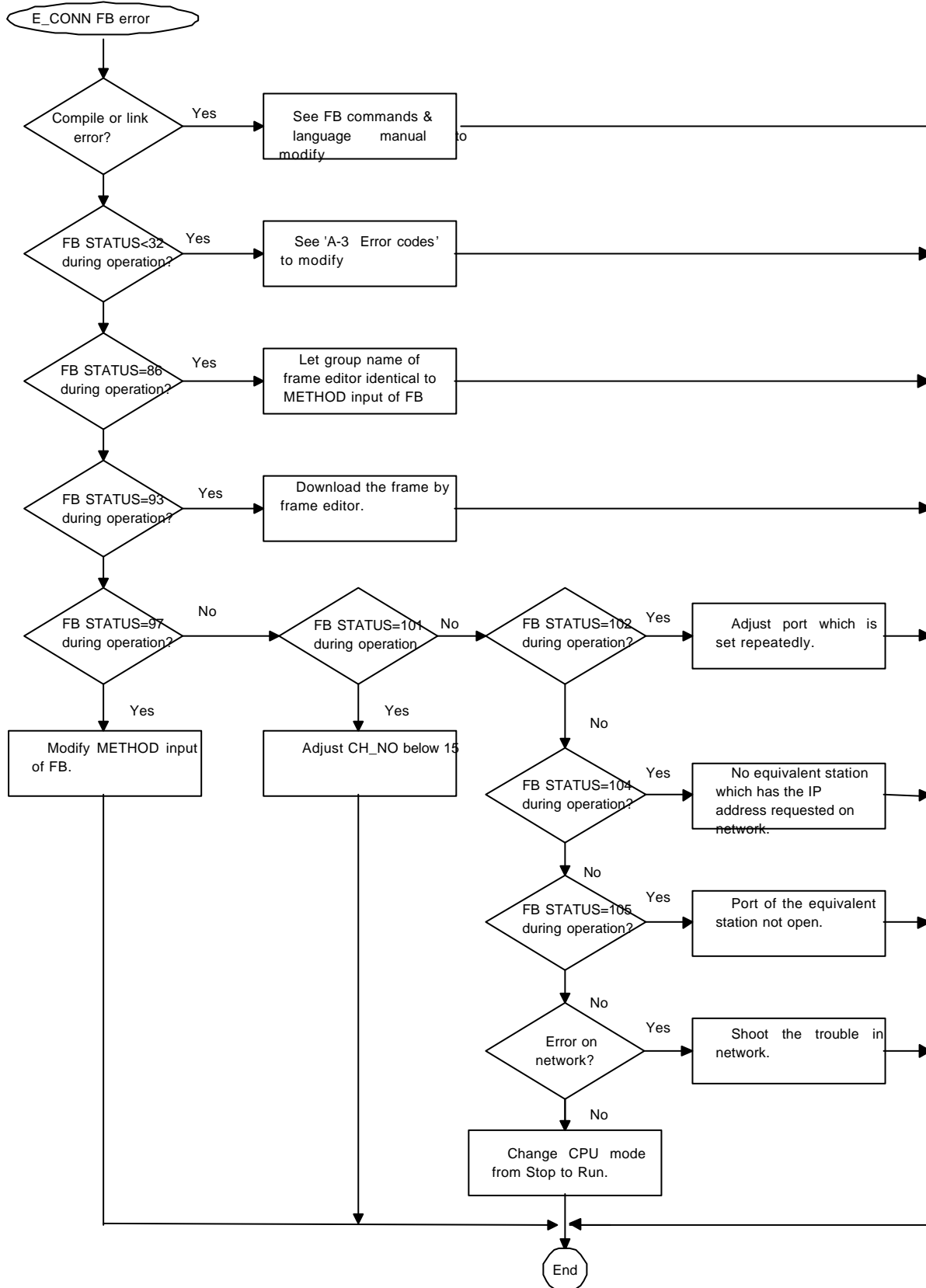
13.2.7 Error code E03-03 : HS link' s Run link contact On unavailable



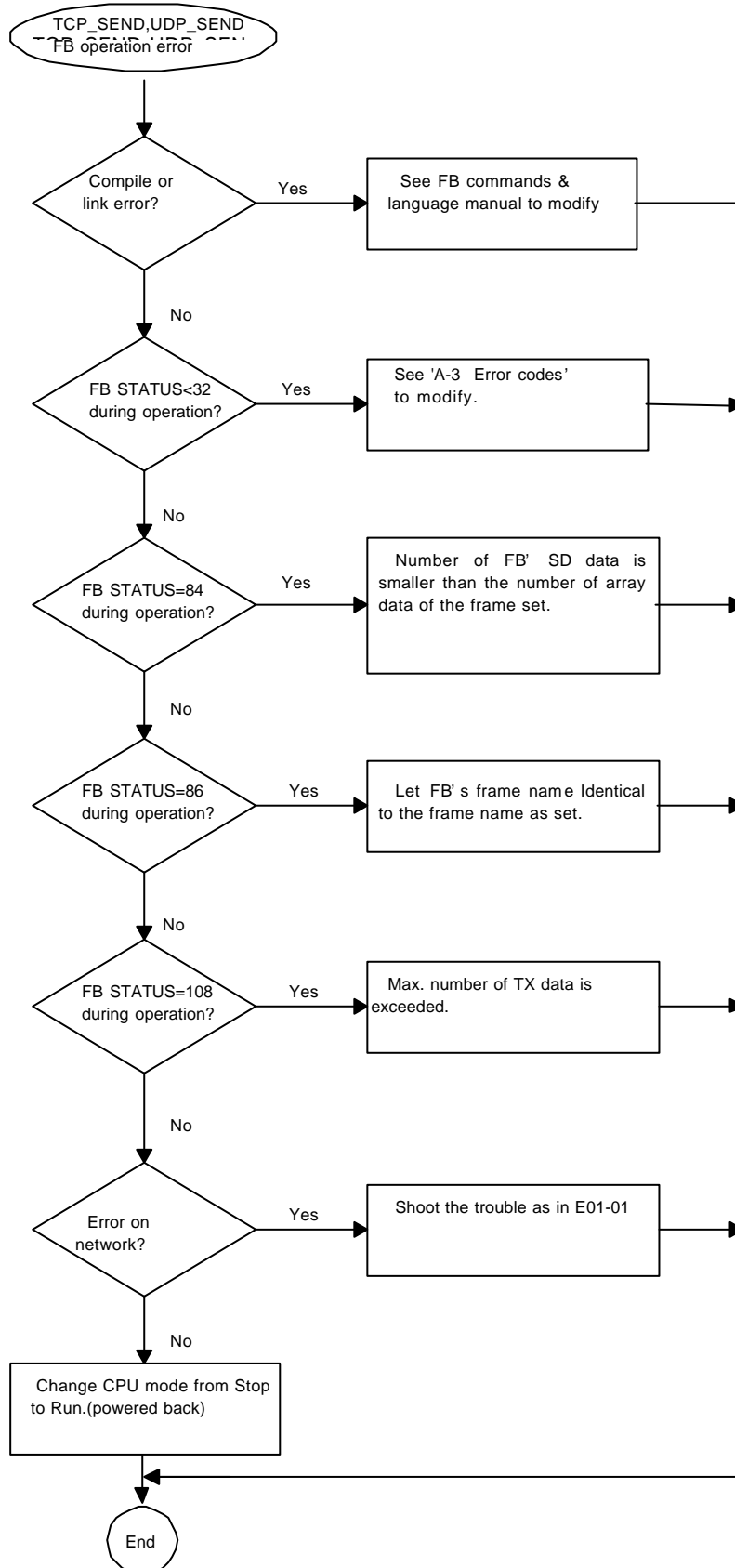
13.2.8 Error code E03-04 : HS link trouble contact On



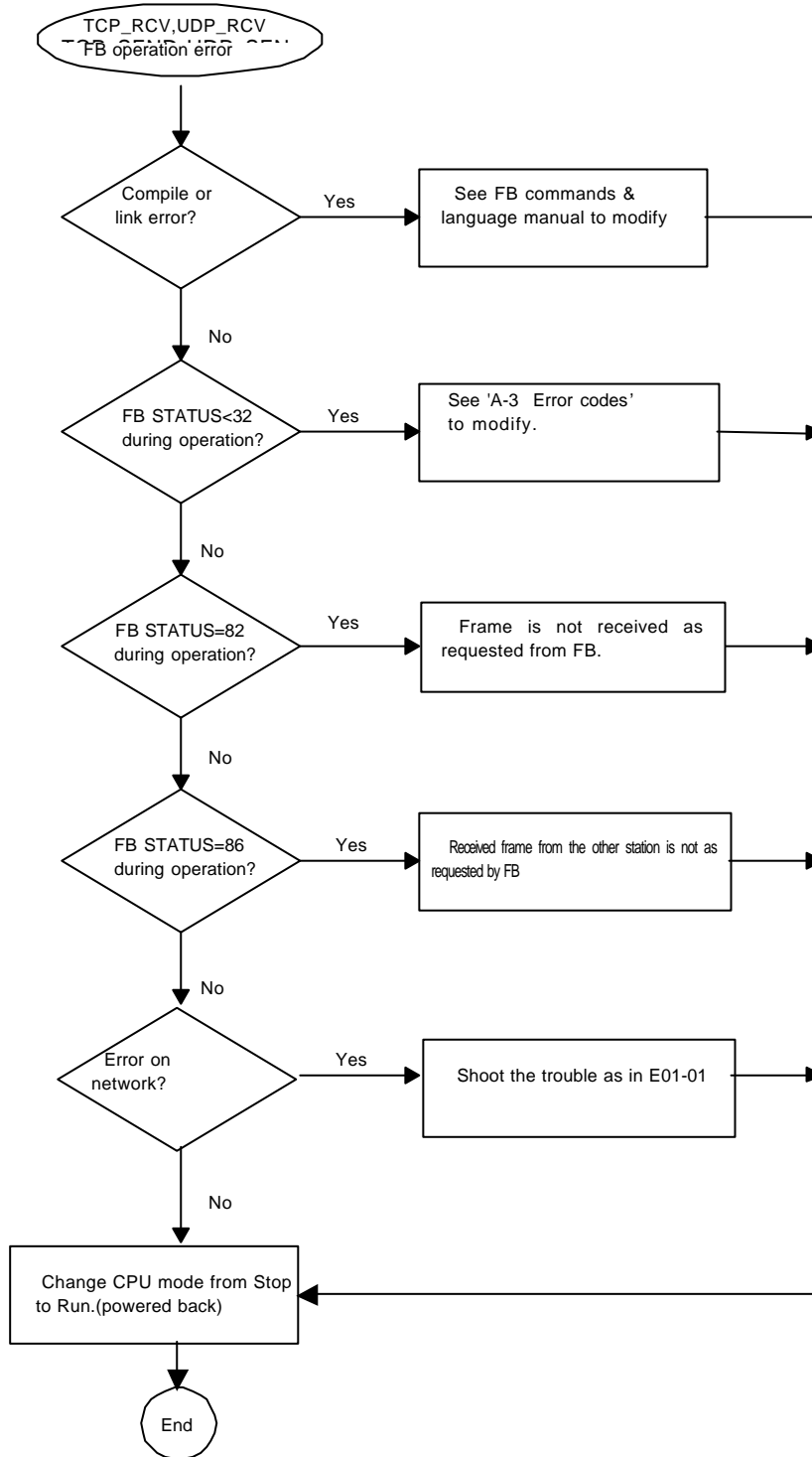
13.2.9 Error code E04-01 : E_CONN function block operation error



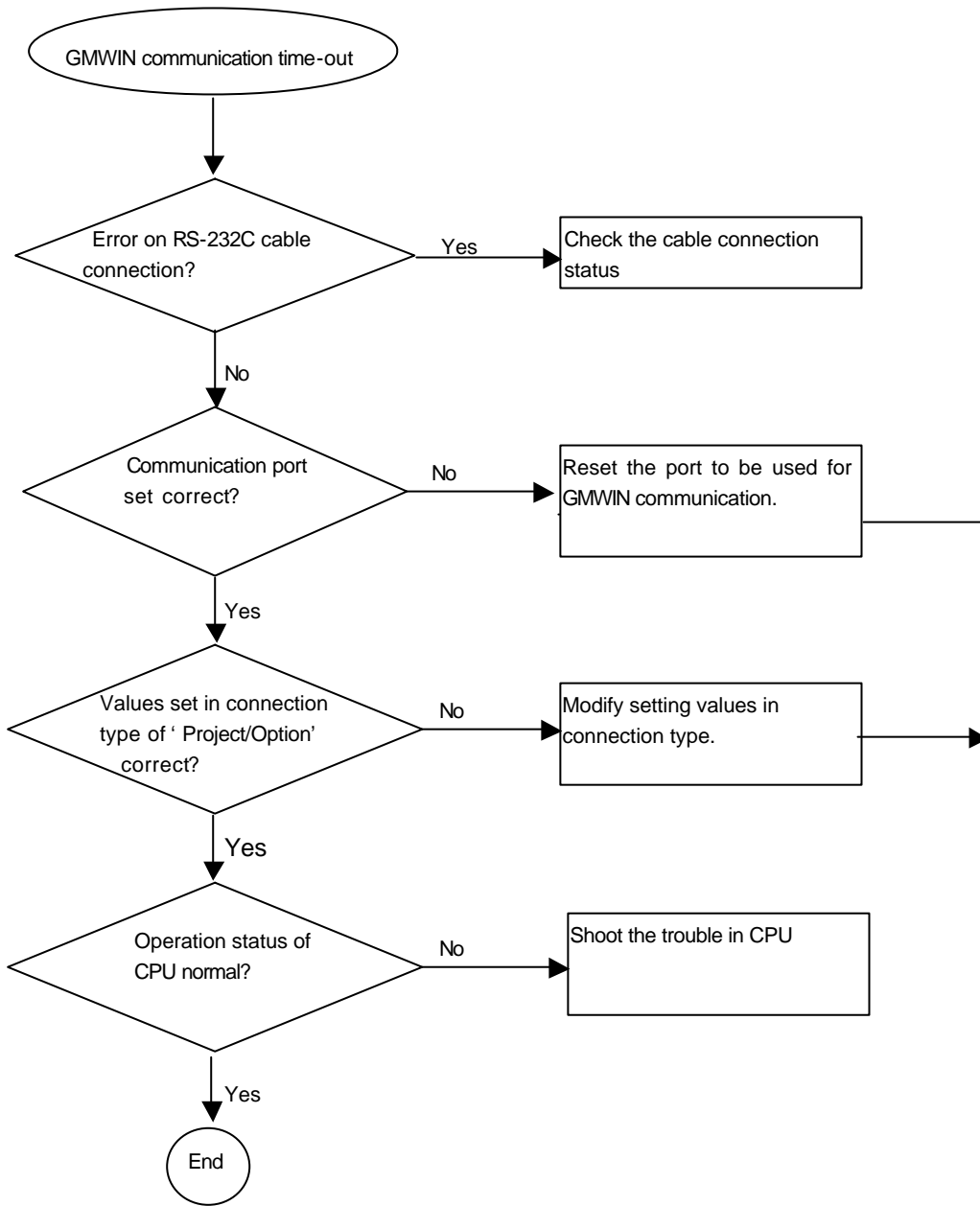
13.2.10 Error code E04-02 : TCP_SEND, UDP_SEND FB operation error



13.2.11 Error code E04-03 : TCP_RCV, UDP_RCV FB operation error



13.2.12 Error code E05-01 : GMWIN communication time-out occurred



13.2.13 Error code E05-02 : GMWIN inner communication error

