

Chapter 9 Troubleshooting

This chapter explains all of error contents which may occur during system management, cause detection, and how to take action. If error occurred in communication module, error contents are displayed through LED of communication module. At this time, user can read error indication(Ex. FMM_06) according to appropriate LED status from Appendix, and perform troubleshooting according to error code(Ex. E00-01) from error indication in this chapter.

9.1 Abnormal operations

Table 9.1(A) H/W related error of communication module

Error code	Error indication (See LED contents of Appendix)	Error contents
E00-01	FMM_06 ~ FMM_10 FMM_24 ~ FMM_27 FSM_05 ~ FSM_10 FSM_32 MCM_06 ~ MCM_09	Hardware self diagnosis error among LED indication of each module.
E00-02	FMM_11 ~ FMM_13 MCM_11	Interface diagnosis error with PLC among LED indication of each module.
E00-03	FOU_41, FOU_42, FOU_43, FOU_44 FOU_51, FOU_52, FOU_61, FOU_62	Power and hardware error of FOU group occurred.
E00-04	FSM_08 ~ FSM_10	Initialization of I/O and special module in slave group.

Table 9.1(B) Abnormal communication status of communication module

Error code	Error indication	Error contents
E01-01	FMM_16 ~ FMM_21 FSM_13 ~ FSM_16 FSM_31 ~ FSM_33	Communication error in master and slave group of Fnet (Communication is not made well).
E01-02	MCM_12 ~ MCM_14	Communication error in communication module group of Mnet (Communication is not made well).
E01-03	FOU_41, FOU_42, FOU_43 FOU_51, FOU_61	Communication error in FOU group of Fnet (Communication is not made well).

Table 9.1(C) Abnormal interface operation of PLC of communication

Error code	Error indication	Error contents
E02-01	FMM_22, FMM_23 MCM_11	Interface with PLC in master and communication module group is not made well.
E02-02	FSM_08 ~ FSM_10	Interface error with I/O module in slave group of Fnet.

9. Troubleshooting

Table 9.1(D) Abnormal operation of *high speed link* function

Error code	Error indication	Error contents
E03-01	<i>High speed link</i> parameter error in error status dialog box.	This error happens when <i>high speed link</i> parameter is not set well or not set at all, or it is broken, after setting link-enable of on-line.
E03-02	<i>High speed link</i> communication is not performed.	When communication is not made well even though <i>high speed link</i> is normal after setting link-enable.
E03-03	Contacts of <code>_HSxRLNK</code> and <code>_HSxTRX</code> are not set to 'On' during <i>high speed link</i> .	When <code>_HSxRLNK</code> is not set to 'On' even though <i>high speed link</i> parameter is normal after setting link-enable.
E03-04	Contacts of <code>_HSxTRBL</code> , etc. are set to On during <i>high speed link</i> .	After setting link-enable and <code>_HSxRLNK</code> of <i>high speed link</i> is set to 'On', when <code>HSxLTRBL</code> is set to 'On' by the problem of PLC and communication in normal status.

Table 9.1(E) Abnormal operation of communication command service function

Error code	Error indication	Error contents
E04-01	When service is performed by Fnet, ERR contact of communication command is set to 'On' and the value of status is not '0'.	ERR of communication command is set to 'On', or NDR/ERR of communication command doesn't become '1'.
E04-02	When service is performed by Mnet, ERR contact of communication command is set to 'On' and the value of status is not '0'.	ERR of communication command is set to 'On', or NDR/ERR of communication command doesn't become '1'.

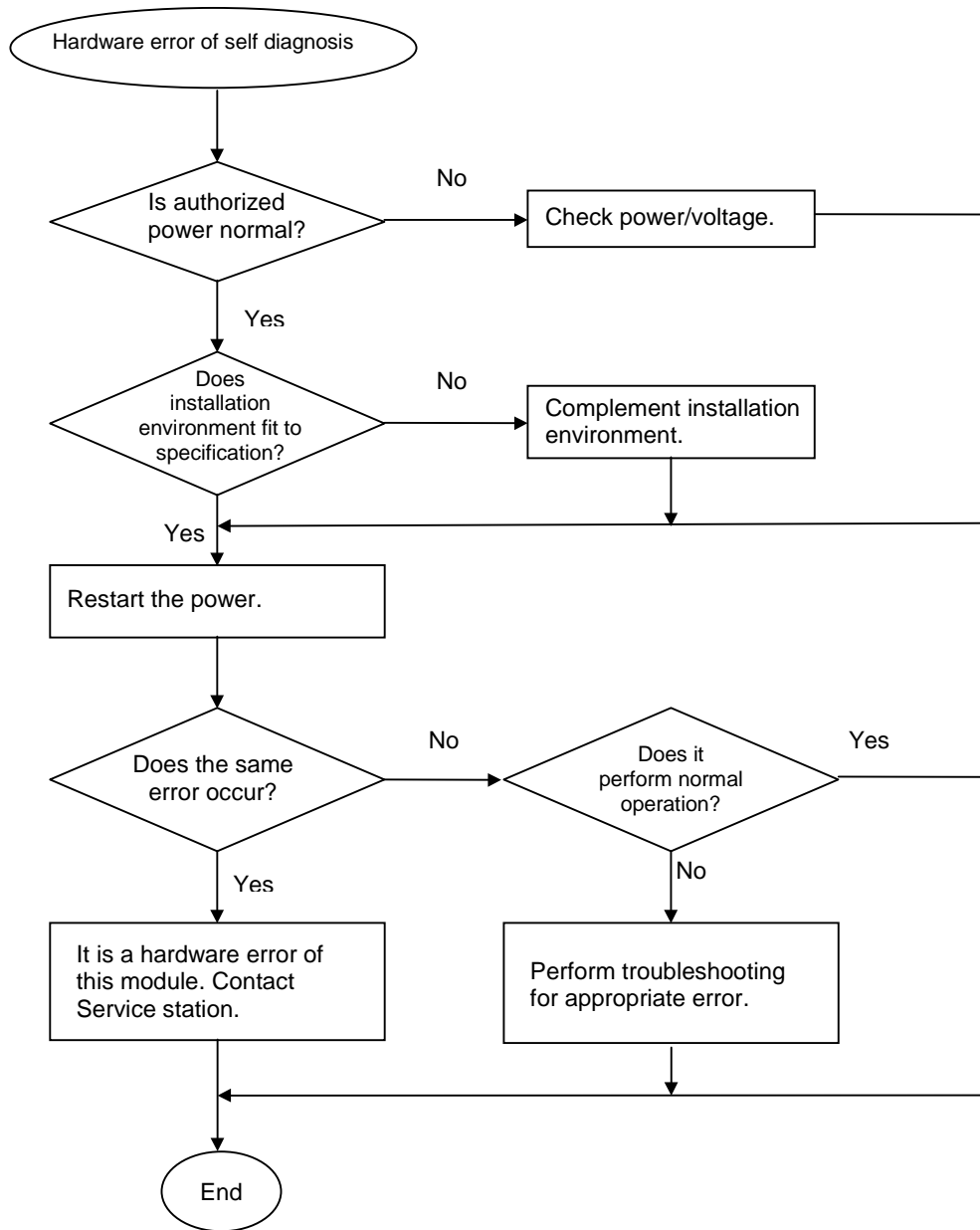
Table 9.1(F) Abnormal operation of GMWIN communication service function

Error code	Error indication	Error contents
E05-01	Message of [No response] occurs during remote connection request.	RS-232C cable is not connected between GMWIN and PLC or the power of PLC is off.
E05-02	When other error message occurred during remote connection request.	Service is not performed well because request is not relevant.

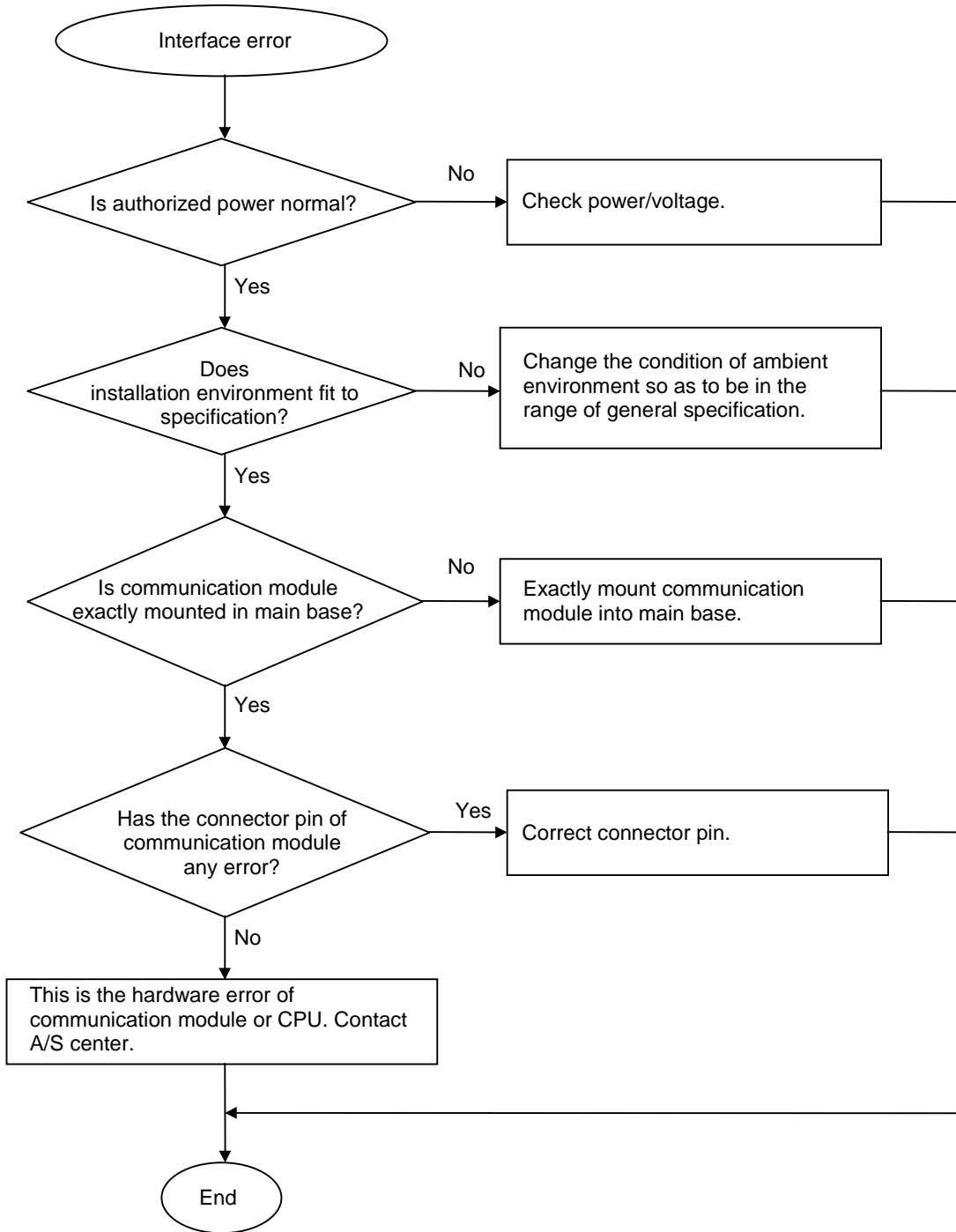
9.2 Troubleshooting by each error code

9.2.1 Error code E00-01 : Hardware error

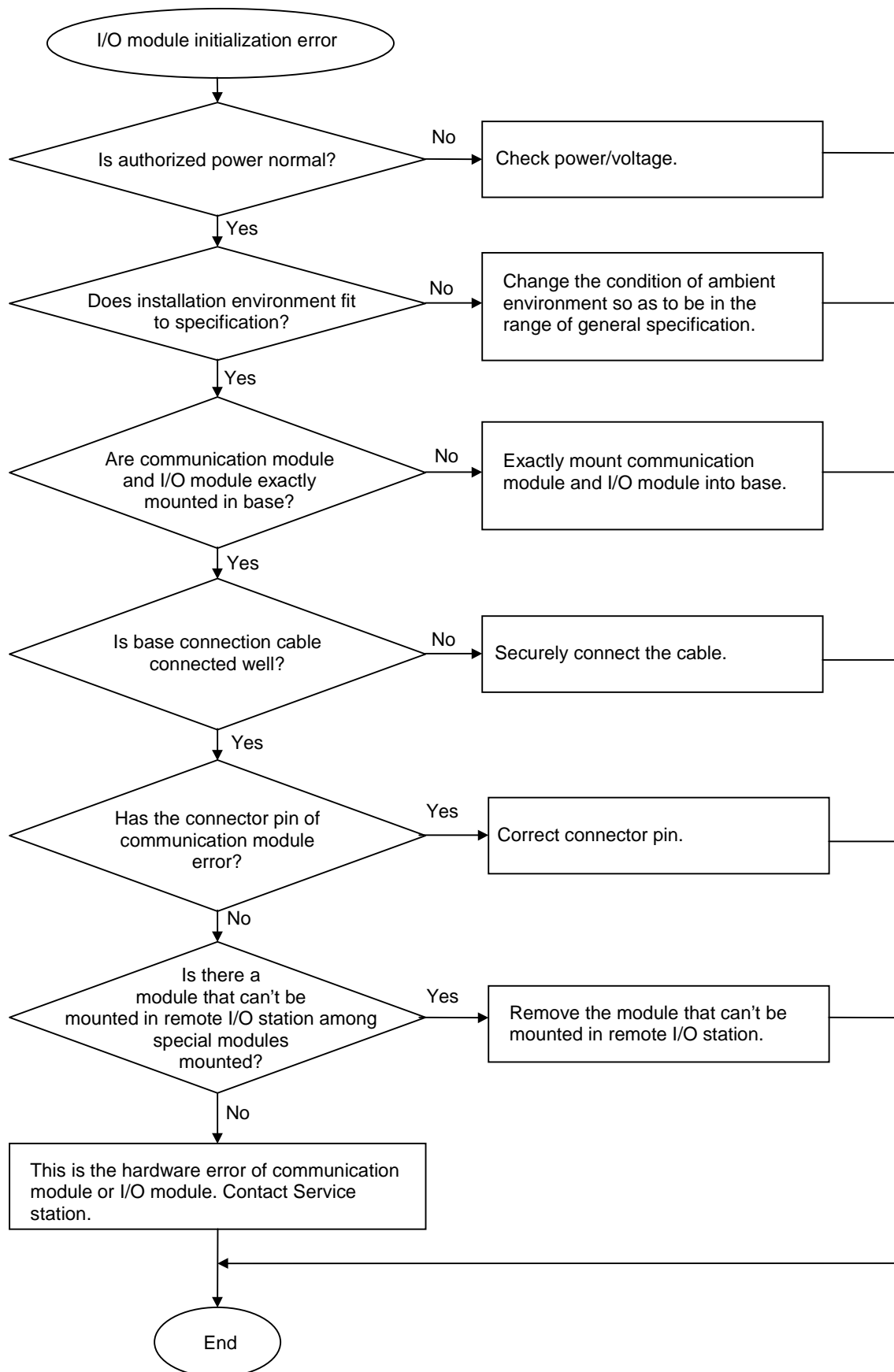
E00-03 : Hardware error of option module



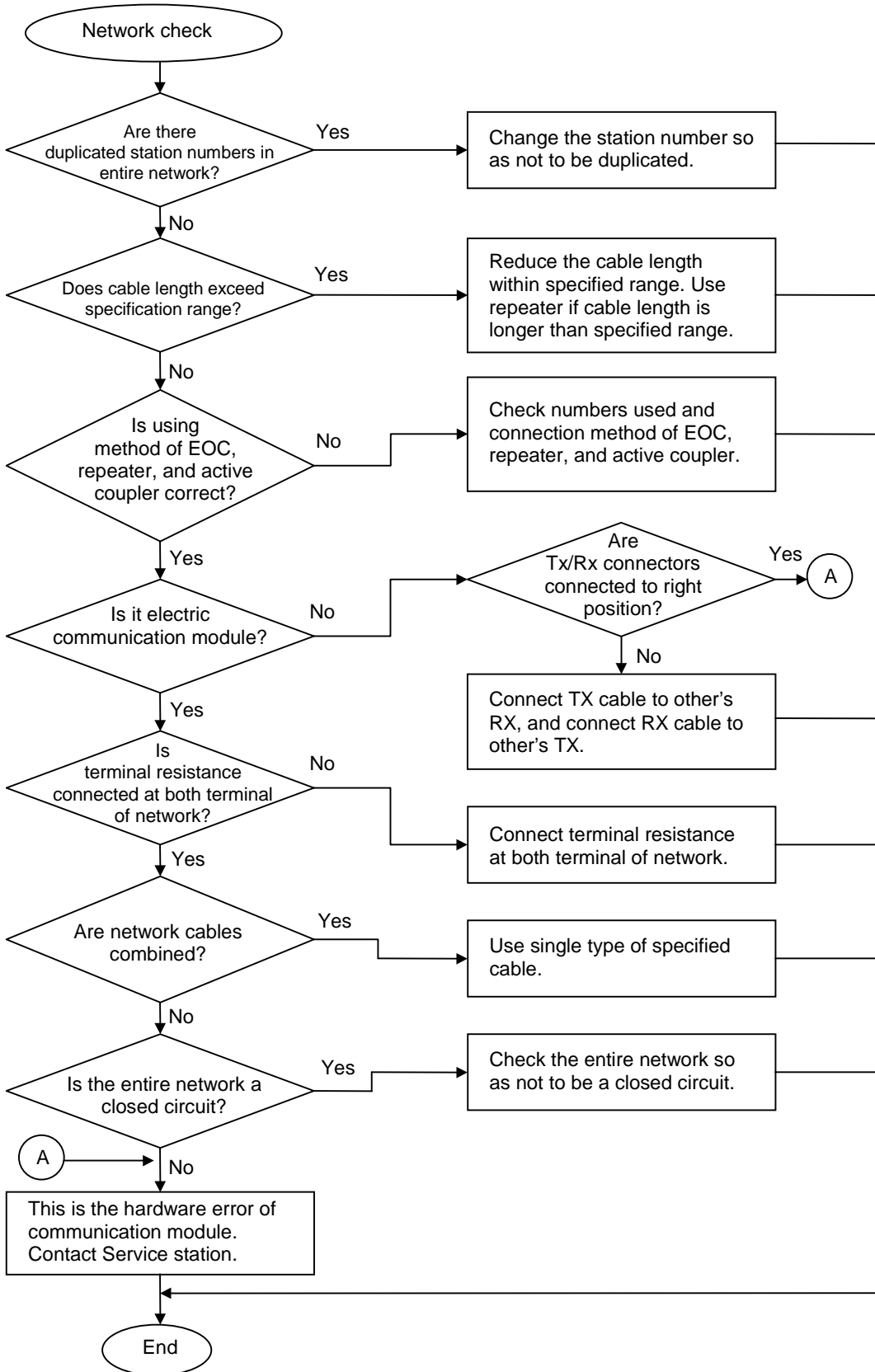
9.2.2 Error code E00-02 : Interface error



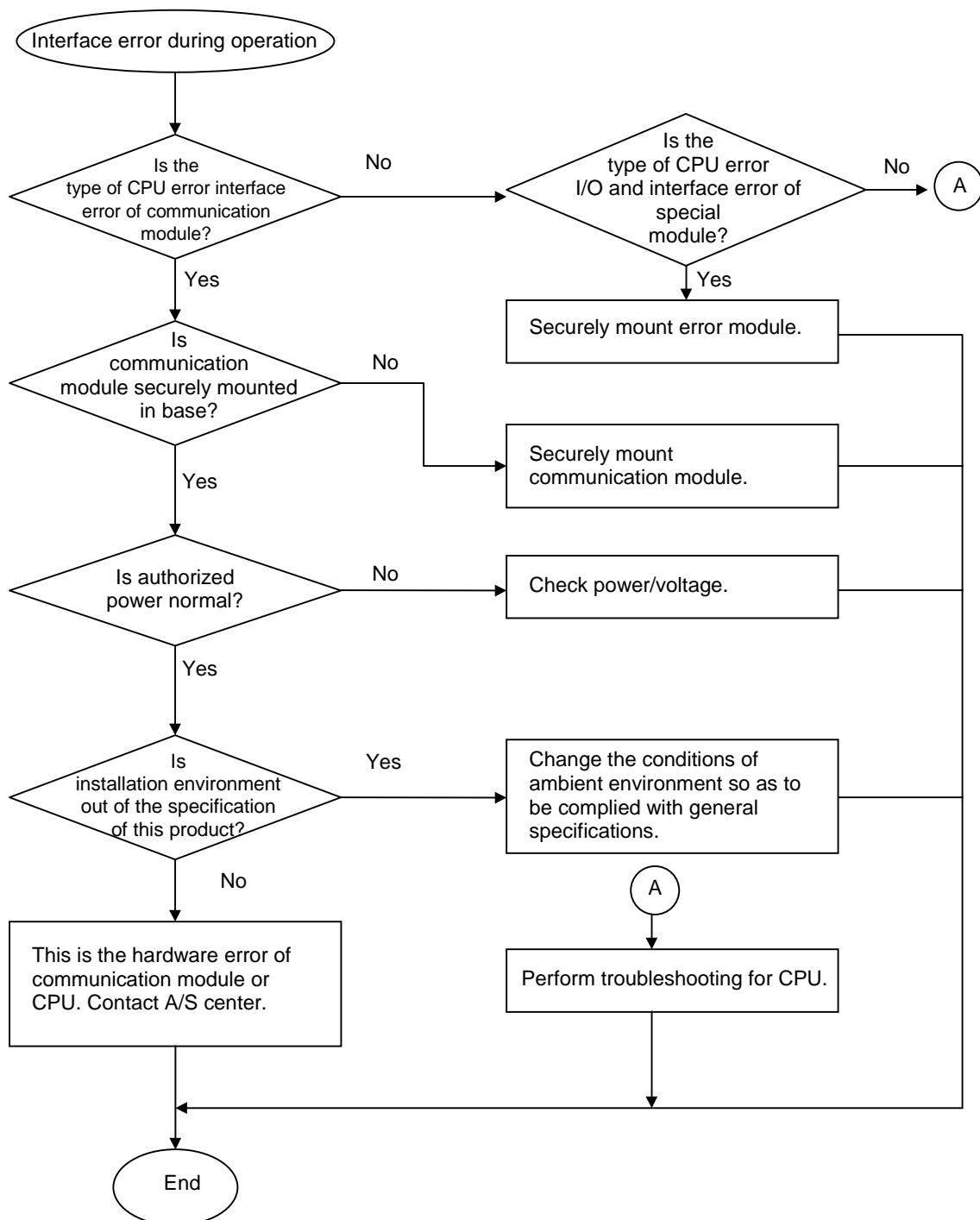
9.2.3 Error code E00-04 : I/O initialization error of FSM(Fieldbus Slave Module)



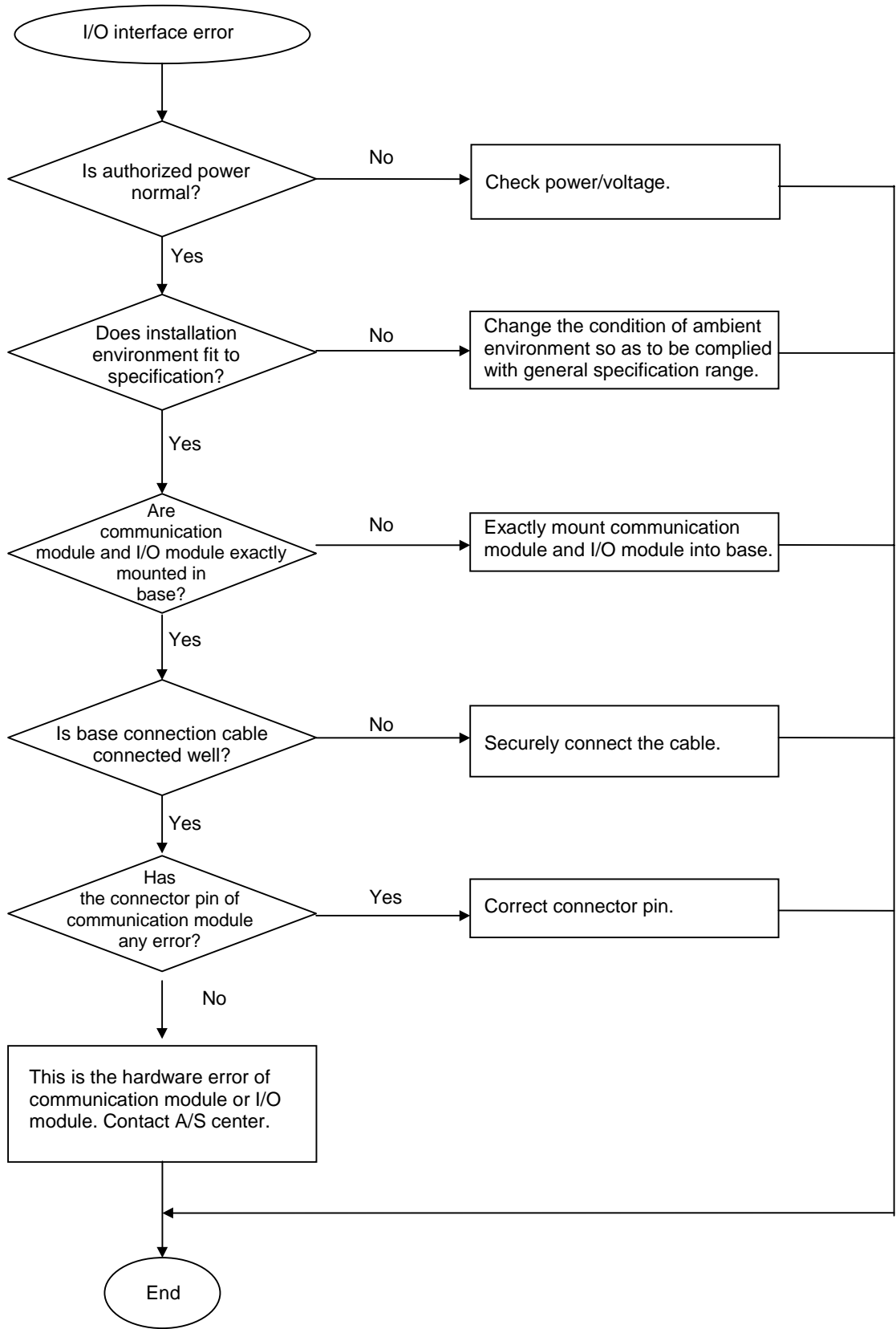
**9.2.4 Error code E01-01 : Communication failure in Fnet
 E01-02 : Communication failure in Mnet
 E01-03 : Communication failure in FOU group**



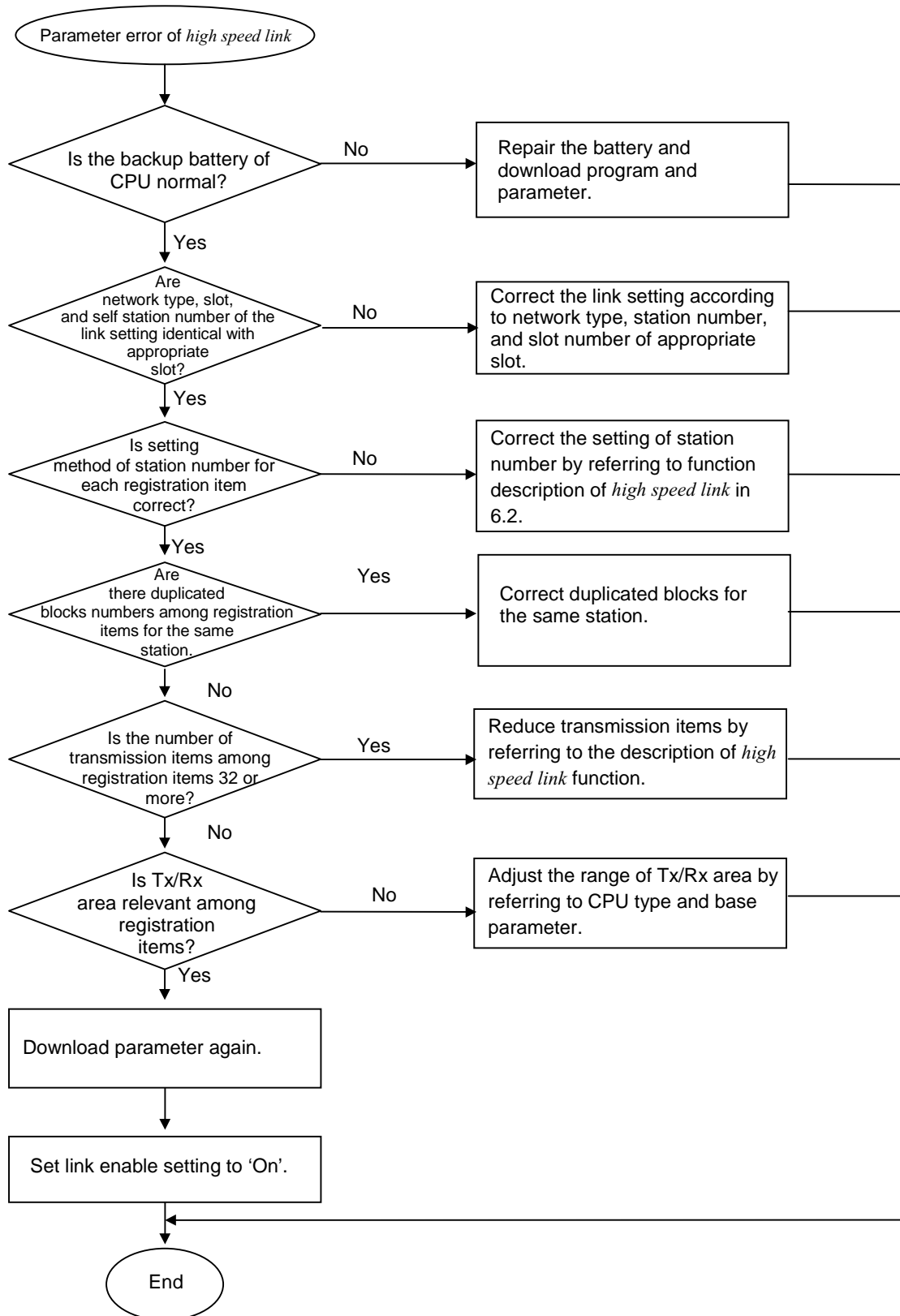
9.2.5 Error code E02-01 : PLC interface error during operation



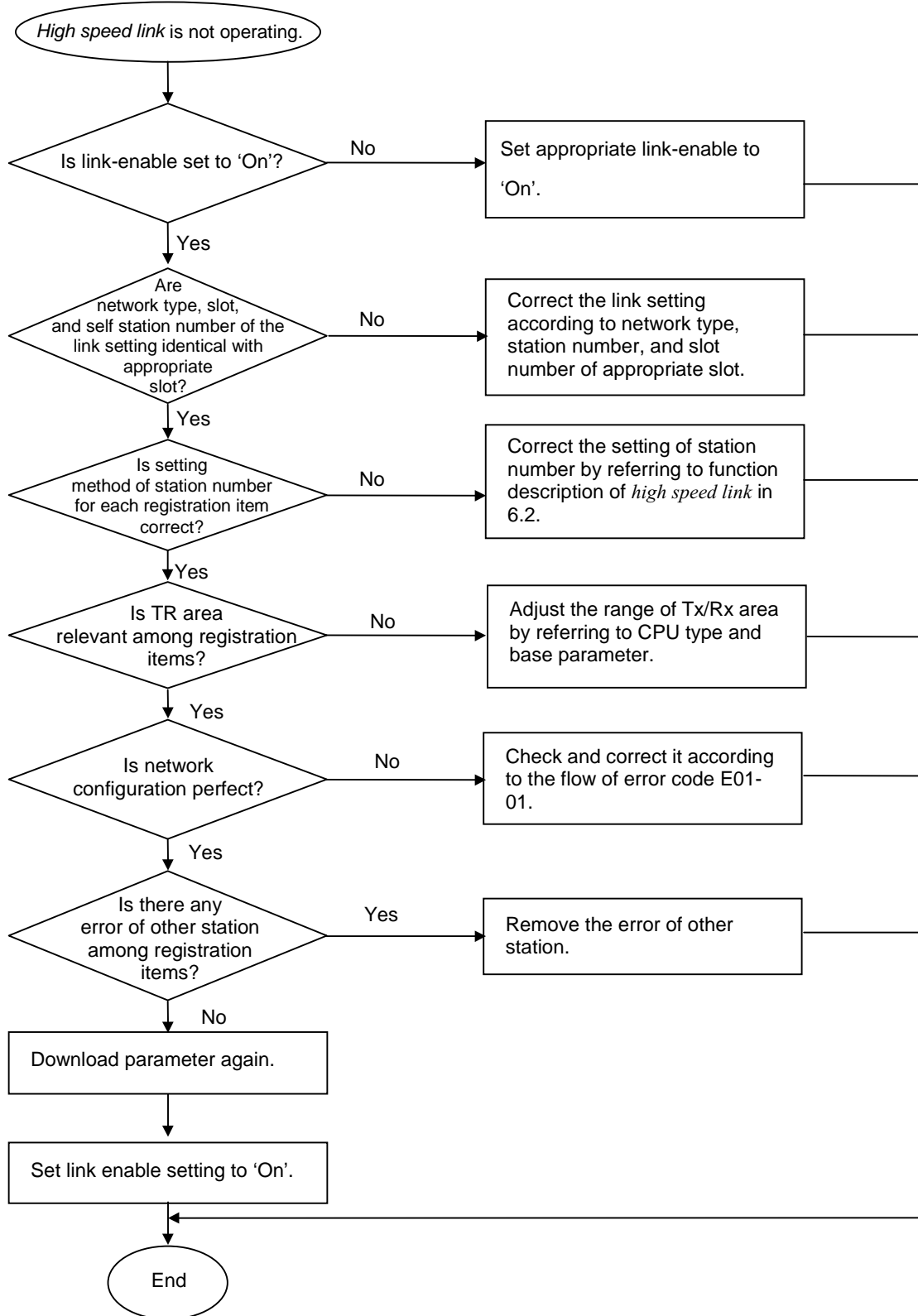
9.2.6 Error code E02-02 : Slave mounting and writing interface error during operation



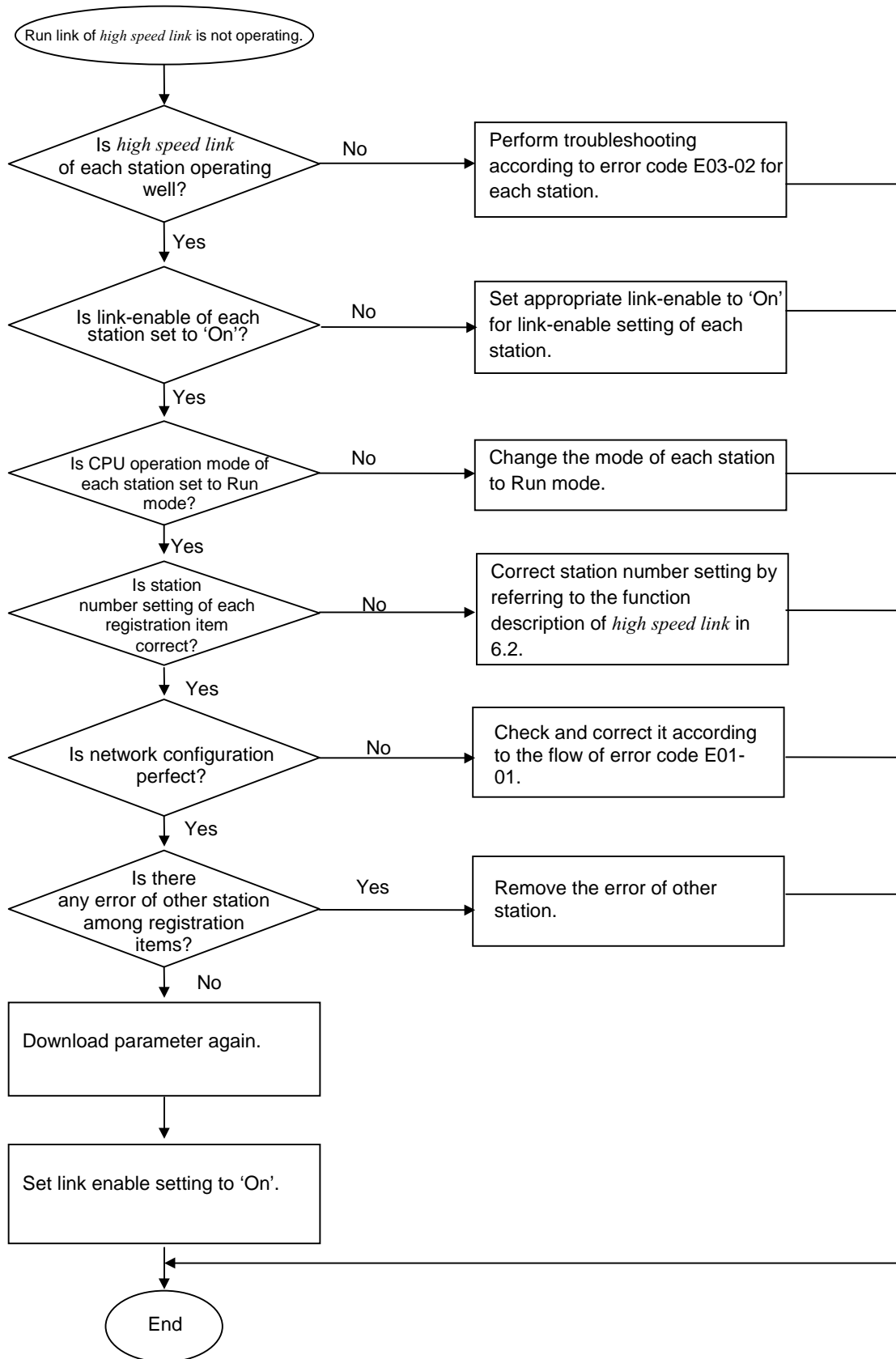
9.2.7 Error code E03-01 : High speed link parameter error



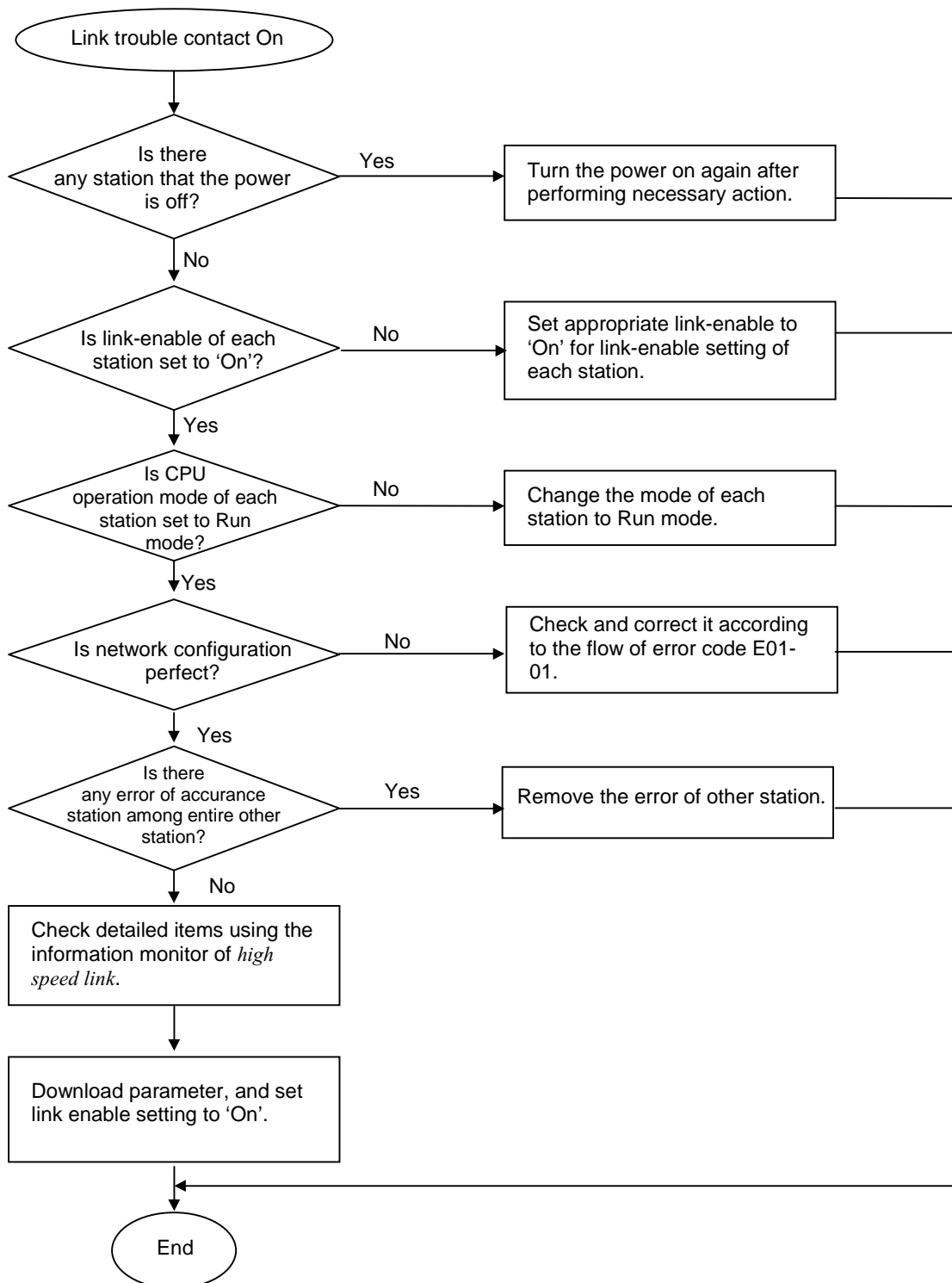
9.2.8 Error code E03-02 : High speed link not run



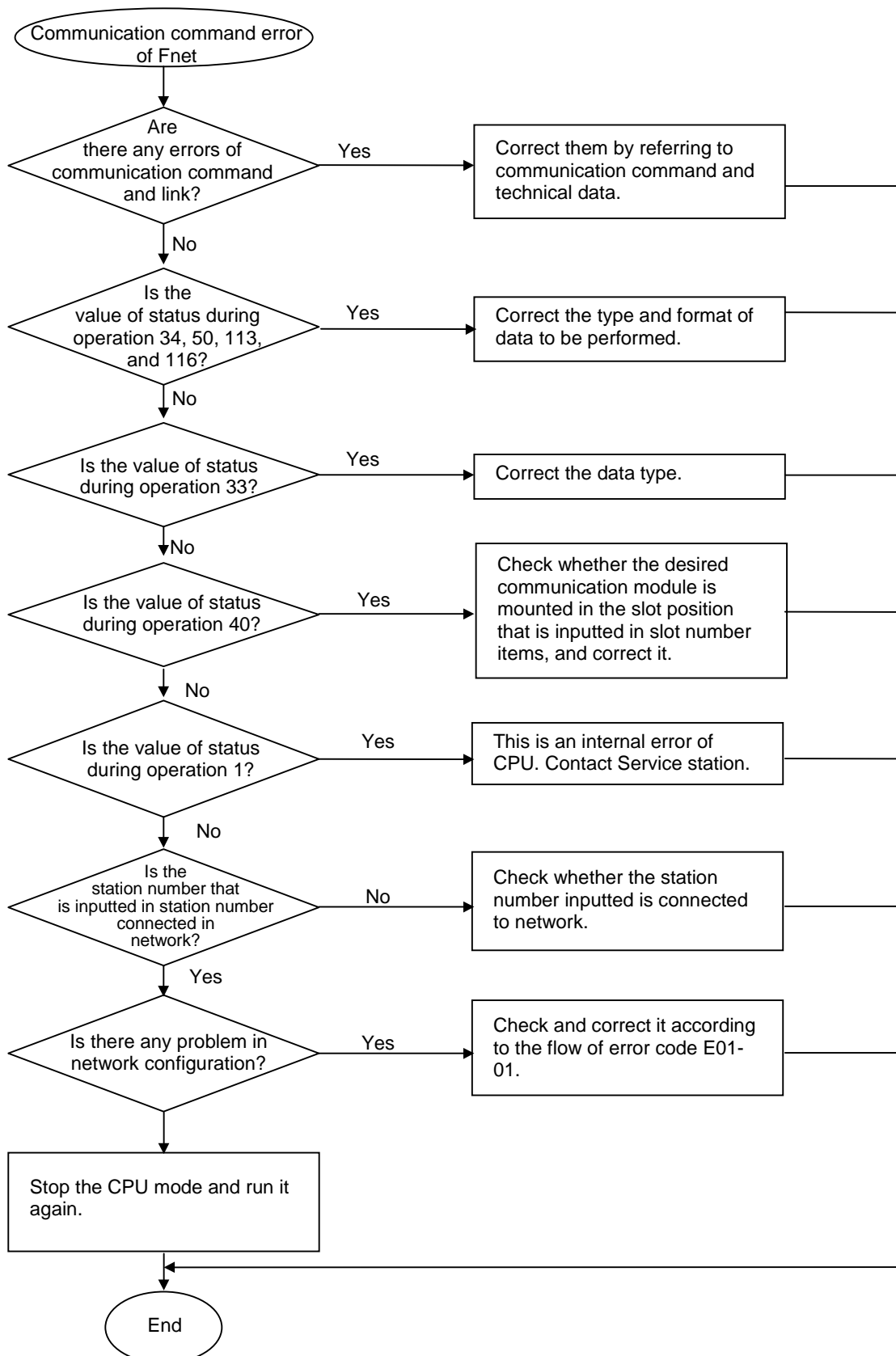
9.2.9 Error code E03-03 : Run link contact of *high speed link* not ON



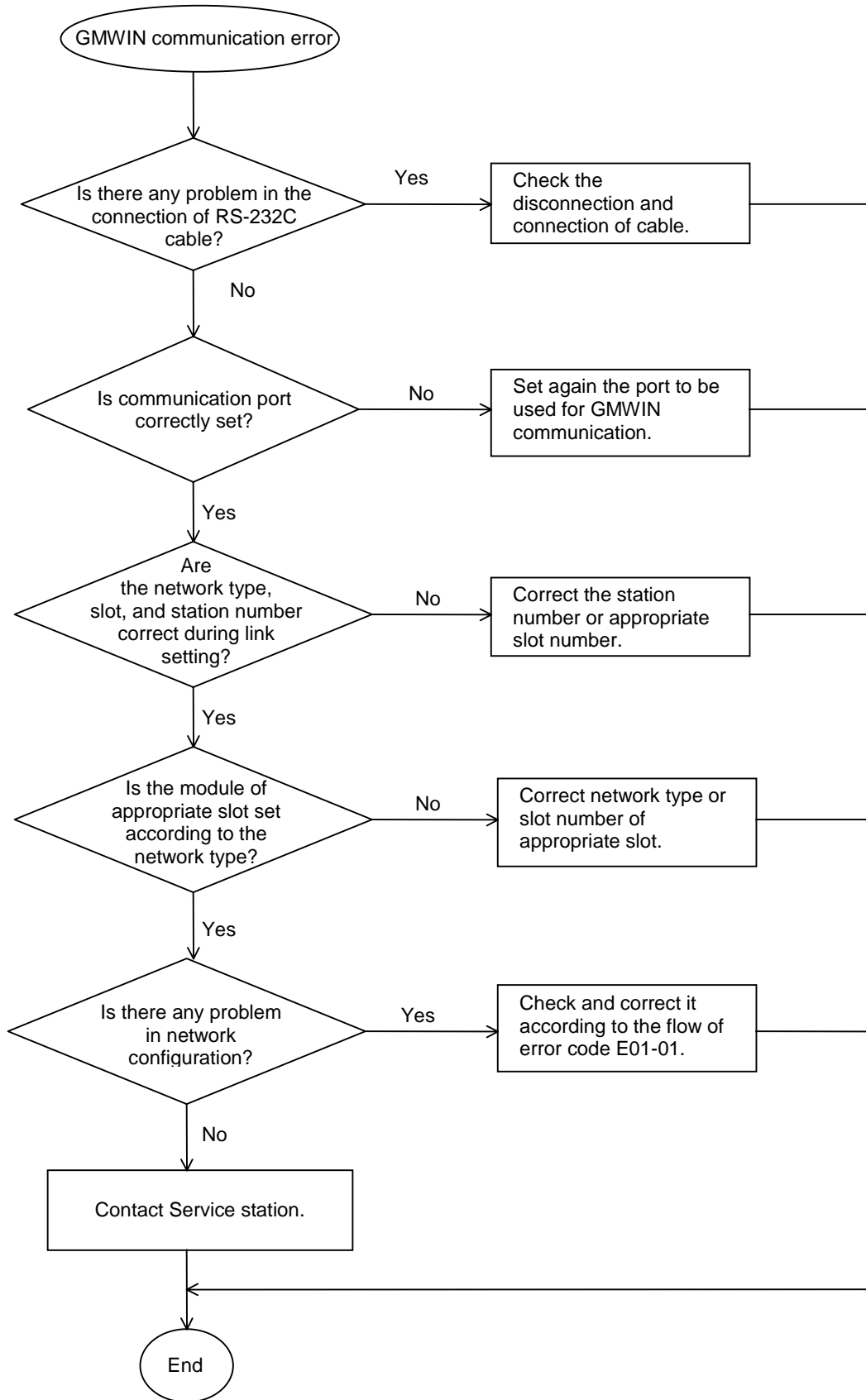
9.2.10 Error code E03-04 : Trouble contact of *high speed link* ON



**9.2.11 Error code E04-01 : Execution error of Fnet communication command
E04-02 : Execution error of Mnet communication command**



9.2.12 Error code E05-01 : Time out error in GMWIN communication



9.2.13 Error code E05-02 : Internal error of Fnet/Mnet GMWIN communication

