

## Chapter 8. TROUBLESHOOTING

The following explains troubles and corrections when using the High Speed Counter Module.  
For troubleshooting relating to the CPU module, refer to the CPU module user's manual.

### 8.1 Troubleshooting

#### 8.1.1 The LED status of High Speed Counter Module

PWR LED is turned off	⇒ See Section
ERR LED is turned on	
ERR LED is flickering	

#### 8.1.2 The counting status of High Speed Counter Module

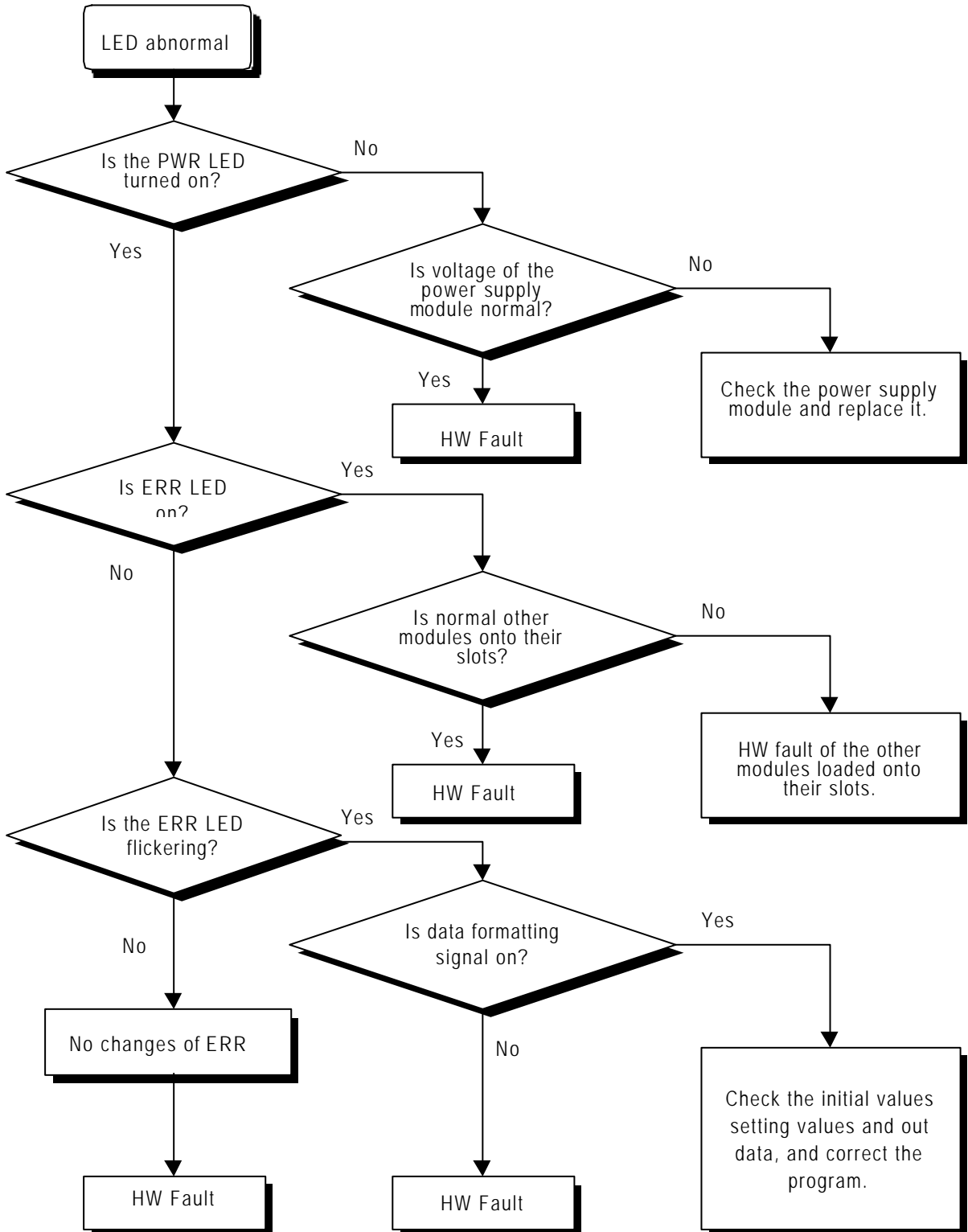
No changes of count value	⇒ See Section
Changes of count value do not conform to the operation status.	⇒ See Section

#### 8.1.3 The output status of High Speed Counter Module

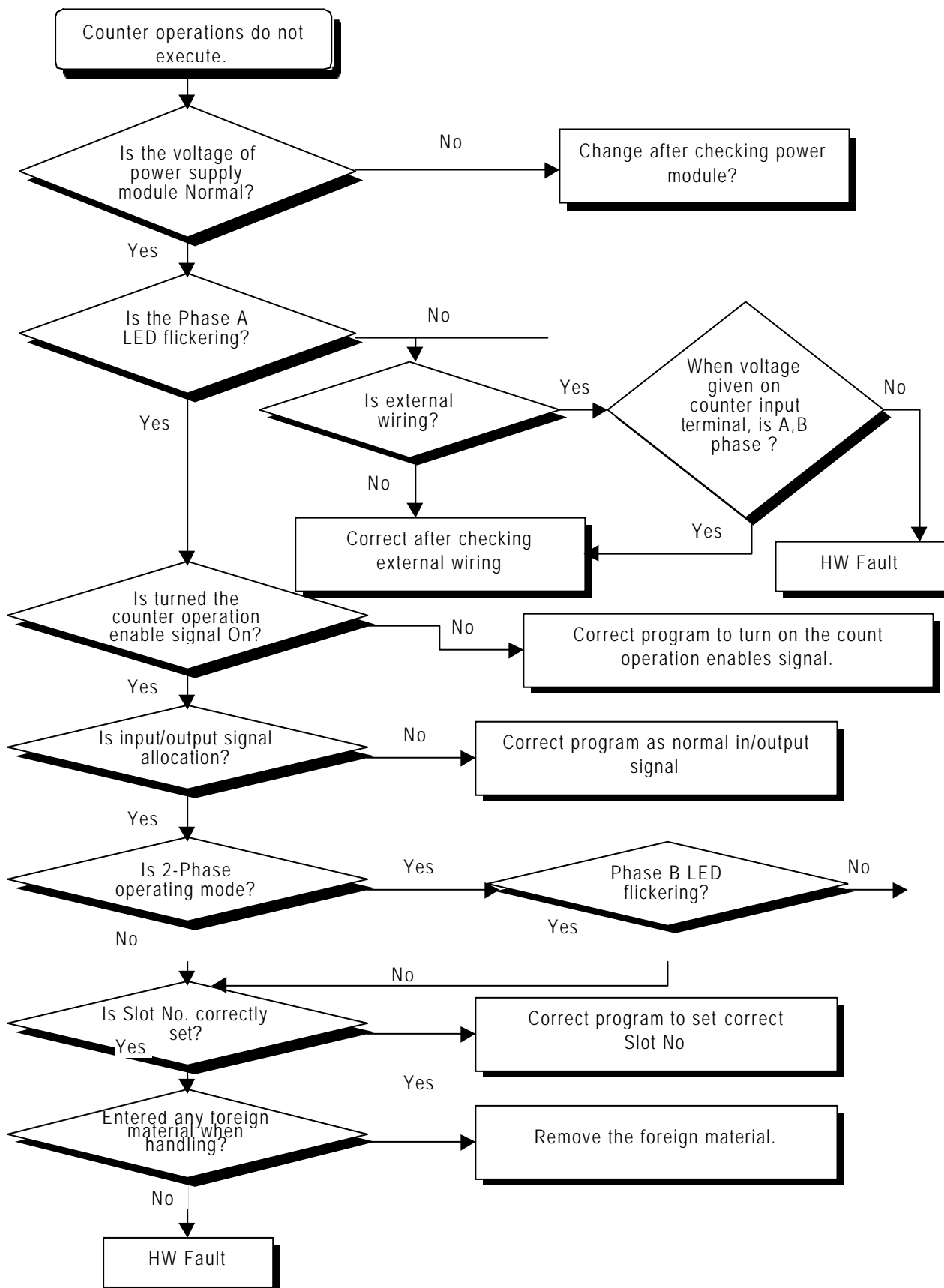
Output operations do not execute.	⇒ See Section
Output operations do not conform to the operation status.	

**8.2 Troubleshooting Procedure**

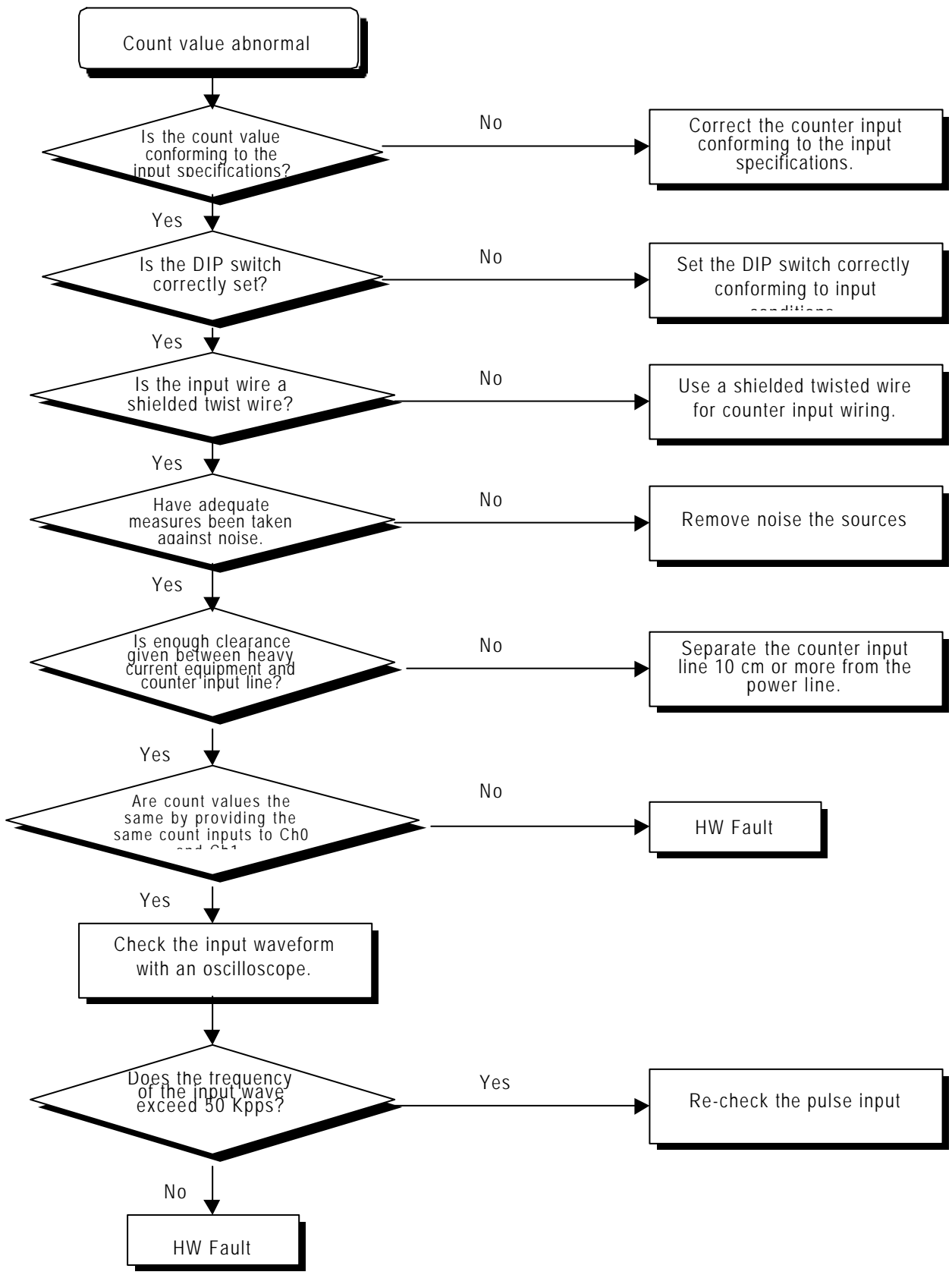
**8.2.1 LED Indication Is Incorrect**



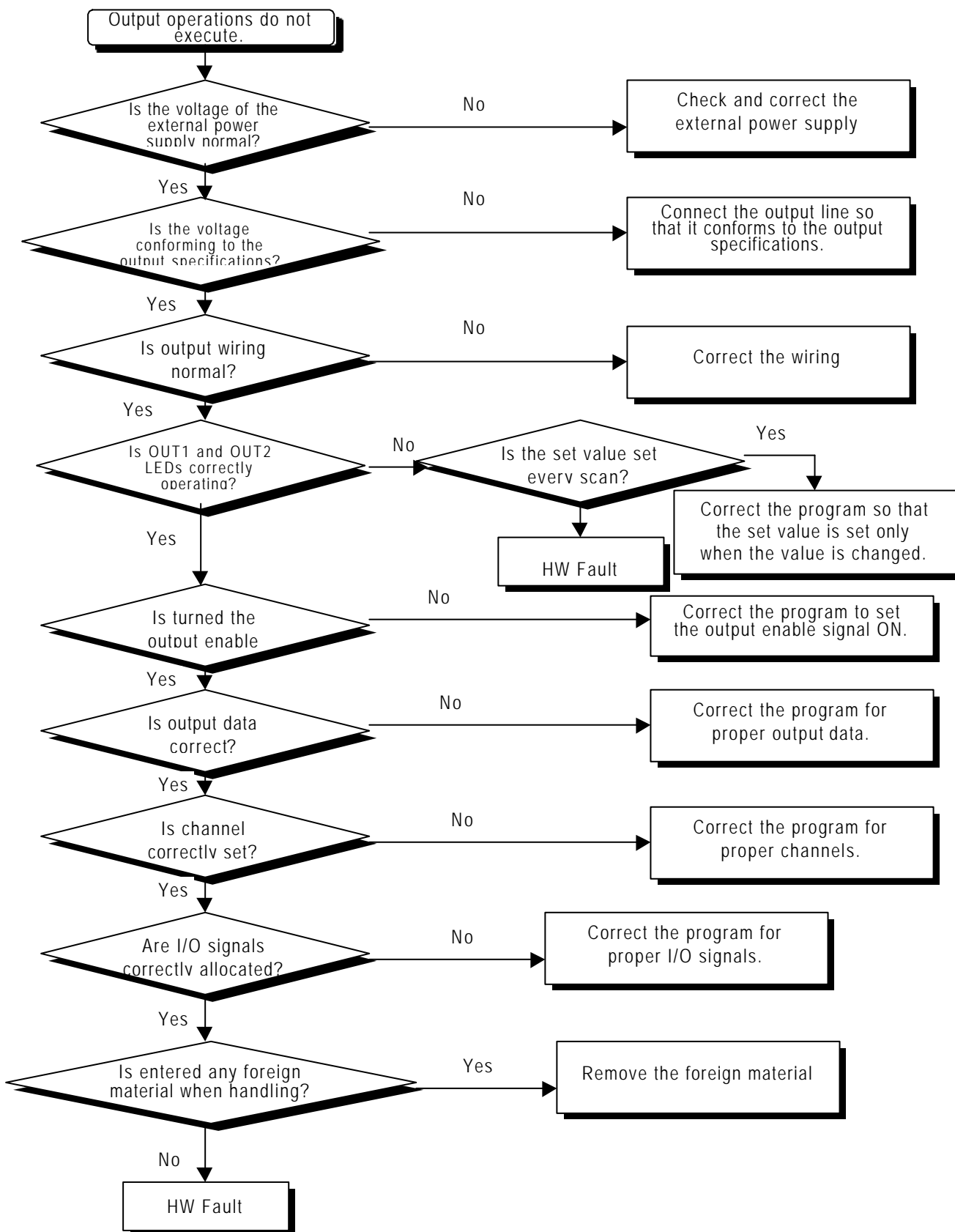
8.2.2 Counter Operations Do Not Execute.



8.2.3 Count Value Is Incorrect



8.2.4 Output Operations Do Not Execute



**8.3 Error LED List**

Type	LED operation	Correct action
Watchdog timer error	Cycle 100 ms flickering (50 ms on, 50 ms off)	Contact a service station
Common RAM error	Cycle 200 ms flickering (100 ms on, 100 ms off)	Contact a service station
Data format error	Cycle 500 ms flickering (250 ms on, 250 ms off)	The data set is outside the range. Correct the data.